



LABORATORY GROWN DIAMOND REPORT

December 29, 2025
 IGI Report Number **LG759527821**
 Description **LABORATORY GROWN DIAMOND**
 Shape and Cutting Style **EMERALD CUT**
 Measurements **6.50 X 4.24 X 2.74 MM**

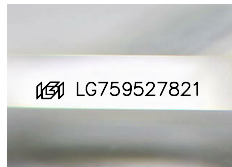
GRADING RESULTS

Carat Weight **0.73 CARAT**
 Color Grade **H**
 Clarity Grade **SI 1**

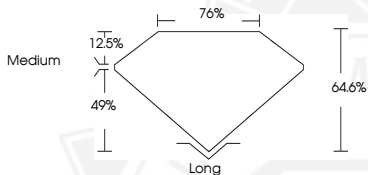
ADDITIONAL GRADING INFORMATION

Polish **GOOD**
 Symmetry **VERY GOOD**
 Fluorescence **NONE**
 Inscription(s) **IGI LG759527821**

Comments: This Laboratory Grown Diamond was created by
 Chemical Vapor Deposition (CVD) growth process.
 Type IIa



Sample Image Used



December 29, 2025
 IGI Report Number **LG759527821**
EMERALD CUT
LABORATORY GROWN DIAMOND
6.50 X 4.24 X 2.74 MM
 Carat Weight **0.73 CARAT**
 Color Grade **H**
 Clarity Grade **SI 1**
 Polish **GOOD**
 Symmetry **VERY GOOD**
 Fluorescence **NONE**
 Inscription(s) **IGI LG759527821**

Comments: This Laboratory Grown
 Diamond was created by
 Chemical Vapor Deposition (CVD)
 growth process. Type IIa



December 29, 2025
 IGI Report Number **LG759527821**
EMERALD CUT
LABORATORY GROWN DIAMOND
6.50 X 4.24 X 2.74 MM
 Carat Weight **0.73 CARAT**
 Color Grade **H**
 Clarity Grade **SI 1**
 Polish **GOOD**
 Symmetry **VERY GOOD**
 Fluorescence **NONE**
 Inscription(s) **IGI LG759527821**

Comments: This Laboratory Grown
 Diamond was created by
 Chemical Vapor Deposition (CVD)
 growth process. Type IIa



THIS DOCUMENT WAS PRODUCED WITH THE FOLLOWING SECURITY MEASURES: SPECIAL DOCUMENT PAPER, INK SCREENS, WATERMARK, BACKGROUND DESIGNS, HOLOGRAM AND OTHER SECURITY FEATURES NOT LISTED AND DO EXCEED DOCUMENT SECURITY INDUSTRY GUIDELINES.