



December 27, 2025

**IGI Report Number LG759525217**  
**HEART MODIFIED BRILLIANT**  
**LABORATORY GROWN DIAMOND**  
**5.68 X 6.06 X 3.19 MM**

Carat Weight **0.81 CARAT**  
Color Grade **FANCY INTENSE PINK**  
Clarity Grade **VS 2**  
Polish **VERY GOOD**  
Symmetry **VERY GOOD**  
Fluorescence **SLIGHT**  
Inscription(s) **IGI LG759525217**

Comments: This Laboratory Grown Diamond was created by Chemical Vapor Deposition (CVD) growth process. Indications of post-growth treatment.

**LABORATORY GROWN DIAMOND REPORT**

December 27, 2025  
IGI Report Number **LG759525217**  
Description **LABORATORY GROWN DIAMOND**  
Shape and Cutting Style **HEART MODIFIED BRILLIANT**  
Measurements **5.68 X 6.06 X 3.19 MM**

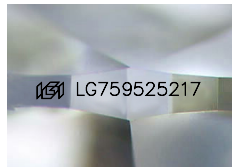
**GRADING RESULTS**

Carat Weight **0.81 CARAT**  
Color Grade **FANCY INTENSE PINK**  
Clarity Grade **VS 2**

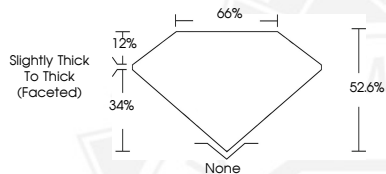
**ADDITIONAL GRADING INFORMATION**

Polish **VERY GOOD**  
Symmetry **VERY GOOD**  
Fluorescence **SLIGHT**  
Inscription(s) **IGI LG759525217**

Comments: This Laboratory Grown Diamond was created by Chemical Vapor Deposition (CVD) growth process. Indications of post-growth treatment.



Sample Image Used



December 27, 2025

**IGI Report Number LG759525217**  
**HEART MODIFIED BRILLIANT**  
**LABORATORY GROWN DIAMOND**  
**5.68 X 6.06 X 3.19 MM**

Carat Weight **0.81 CARAT**  
Color Grade **FANCY INTENSE PINK**  
Clarity Grade **VS 2**  
Polish **VERY GOOD**  
Symmetry **VERY GOOD**  
Fluorescence **SLIGHT**  
Inscription(s) **IGI LG759525217**

Comments: This Laboratory Grown Diamond was created by Chemical Vapor Deposition (CVD) growth process. Indications of post-growth treatment.



THIS DOCUMENT WAS PRODUCED WITH THE FOLLOWING SECURITY MEASURES: SPECIAL DOCUMENT PAPER, INK SCREENS, WATERMARK, BACKGROUND DESIGNS, HOLOGRAM AND OTHER SECURITY FEATURES NOT LISTED AND DO EXCEED DOCUMENT SECURITY INDUSTRY GUIDELINES.