



ELECTRONIC COPY

LG759525068
Report verification at igi.org



January 19, 2026
IGI Report Number **LG759525068**
Description **LABORATORY GROWN DIAMOND**
Shape and Cutting Style **CUT CORNERED
RECTANGULAR MODIFIED
BRILLIANT**
Measurements **10.31 X 6.79 X 5.13 MM**
GRADING RESULTS
Carat Weight **3.23 CARATS**
Color Grade **FANCY VIVID BROWNISH
PINK**
Clarity Grade **SI 1**

LABORATORY GROWN DIAMOND REPORT

January 19, 2026
IGI Report Number **LG759525068**
Description **LABORATORY GROWN DIAMOND**
Shape and Cutting Style **CUT CORNERED RECTANGULAR
MODIFIED BRILLIANT**
Measurements **10.31 X 6.79 X 5.13 MM**

GRADING RESULTS

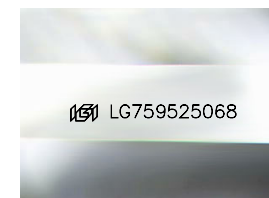
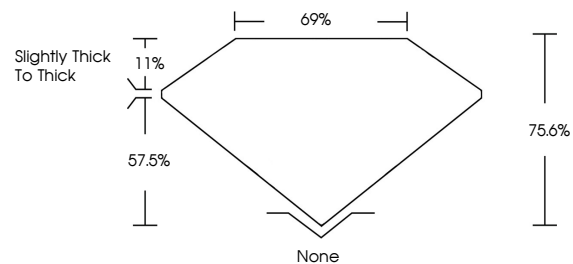
Carat Weight **3.23 CARATS**
Color Grade **FANCY VIVID BROWNISH PINK**
Clarity Grade **SI 1**

ADDITIONAL GRADING INFORMATION

Polish **VERY GOOD**
Symmetry **VERY GOOD**
Fluorescence **SLIGHT**
Inscription(s) **IGI LG759525068**

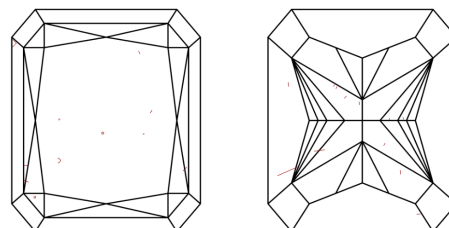
Comments: This Laboratory Grown Diamond was created by Chemical Vapor Deposition (CVD) growth process. Indications of post-growth treatment.

PROPORTIONS



Sample Image Used

CLARITY CHARACTERISTICS



KEY TO SYMBOLS

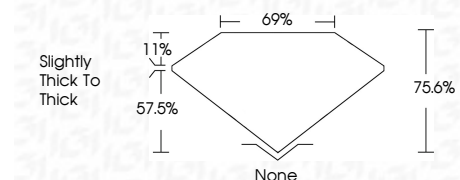
Red symbols indicate internal characteristics.
Green symbols indicate external characteristics.

COLOR

D E F G H I J Faint Very Light Light

CLARITY

FL	IF	VS ¹⁻²	VS ¹⁻²	SI ¹⁻²	I ¹⁻³
Flawless	Internally Flawless	Very Very Slightly Included	Very Slightly Included	Slightly Included	Included



ADDITIONAL GRADING INFORMATION

Polish **VERY GOOD**
Symmetry **VERY GOOD**
Fluorescence **SLIGHT**
Inscription(s) **IGI LG759525068**
Comments: This Laboratory Grown Diamond was created by Chemical Vapor Deposition (CVD) growth process. Indications of post-growth treatment.



IGI



January 19, 2026
IGI Report No LG759525068
CUT CORNERED RECT. MODIFIED BRILLIANT
10.31 X 6.79 X 5.13 MM
3.23 CARATS
FANCY VIVID BROWNISH PINK
SI 1
75.6%
69%
Slightly thick to thick
None
VERY GOOD
VERY GOOD
SLIGHT
IGI LG759525068
Comments: This Laboratory Grown Diamond was created by Chemical Vapor Deposition (CVD) growth process. Indications of post-growth treatment.