



ELECTRONIC COPY

LG759525001
Report verification at igi.org



January 10, 2026
IGI Report Number **LG759525001**
Description **LABORATORY GROWN DIAMOND**
Shape and Cutting Style **SQUARE CUSHION MODIFIED BRILLIANT**
Measurements **9.19 X 8.99 X 6.12 MM**
GRADING RESULTS
Carat Weight **4.02 CARATS**
Color Grade **FANCY PINK**
Clarity Grade **SI 2**

LABORATORY GROWN DIAMOND REPORT

January 10, 2026
IGI Report Number **LG759525001**
Description **LABORATORY GROWN DIAMOND**
Shape and Cutting Style **SQUARE CUSHION MODIFIED BRILLIANT**
Measurements **9.19 X 8.99 X 6.12 MM**

GRADING RESULTS

Carat Weight **4.02 CARATS**
Color Grade **FANCY PINK**
Clarity Grade **SI 2**

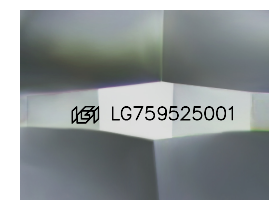
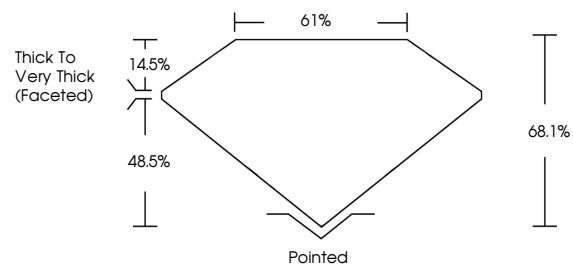
ADDITIONAL GRADING INFORMATION

Polish **EXCELLENT**
Symmetry **EXCELLENT**
Fluorescence **SLIGHT**
Inscription(s) **IGI LG759525001**

Comments: This Laboratory Grown Diamond was created by Chemical Vapor Deposition (CVD) growth process.
Indications of post-growth treatment.

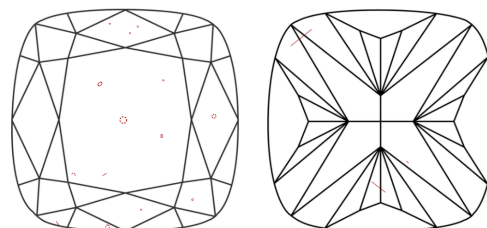
Secondary color: Brown

PROPORTIONS



Sample Image Used

CLARITY CHARACTERISTICS



KEY TO SYMBOLS

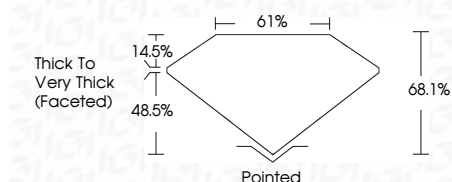
Red symbols indicate internal characteristics.
Green symbols indicate external characteristics.

COLOR

D E F G H I J Faint Very Light Light

CLARITY

FL	IF	VS ¹⁻²	VS ¹⁻²	SI ¹⁻²	I ¹⁻³
Flawless	Internally Flawless	Very Very Slightly Included	Very Slightly Included	Slightly Included	Included



ADDITIONAL GRADING INFORMATION

Polish **EXCELLENT**
Symmetry **EXCELLENT**
Fluorescence **SLIGHT**
Inscription(s) **IGI LG759525001**
Comments: This Laboratory Grown Diamond was created by Chemical Vapor Deposition (CVD) growth process.
Indications of post-growth treatment.
Secondary color: Brown



January 10, 2026
IGI Report No LG759525001
SQUARE CUSHION MODIFIED BRILLIANT
9.19 X 8.99 X 6.12 MM
4.02 CARATS
FANCY PINK
SI 2
68.1%
61%
Thick to Very Thick (Faceted)
Pointed
EXCELLENT
EXCELLENT
SLIGHT
IGI LG759525001
Comments: This Laboratory Grown Diamond was created by Chemical Vapor Deposition (CVD) growth process.
Indications of post-growth treatment.
Secondary color: Brown