



ELECTRONIC COPY

LG759524094
Report verification at igi.org



December 22, 2025

IGI Report Number **LG759524094**

Description **LABORATORY GROWN DIAMOND**

Shape and Cutting Style **HEART BRILLIANT**

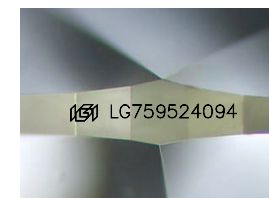
Measurements **6.19 X 6.99 X 4.00 MM**

GRADING RESULTS

Carat Weight **1.02 CARAT**

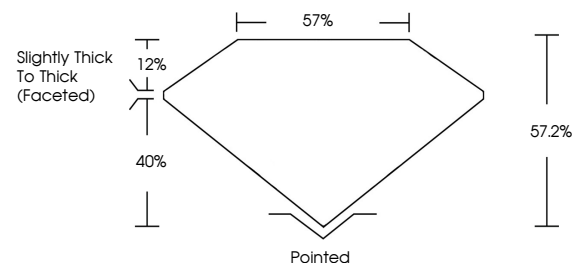
Color Grade **E**

Clarity Grade **VS 1**

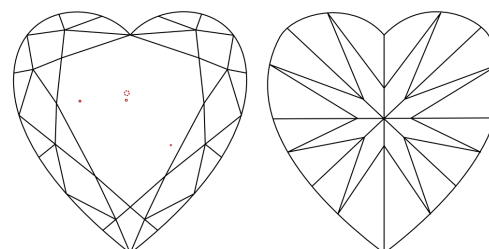


Sample Image Used

PROPORTIONS



CLARITY CHARACTERISTICS



KEY TO SYMBOLS

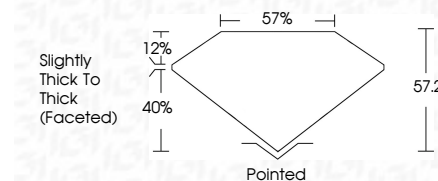
Red symbols indicate internal characteristics.
Green symbols indicate external characteristics.

COLOR

D E F G H I J Faint Very Light Light

CLARITY

FL	IF	VS ¹⁻²	VS ¹⁻²	SI ¹⁻²	I ¹⁻³
Flawless	Internally Flawless	Very Very Slightly Included	Very Slightly Included	Slightly Included	Included



ADDITIONAL GRADING INFORMATION

Polish **EXCELLENT**

Symmetry **EXCELLENT**

Fluorescence **NONE**

Inscription(s) **IGI LG759524094**

Comments: This Laboratory Grown Diamond was created by Chemical Vapor Deposition (CVD) growth process. Type IIa



IGI



December 22, 2025	1.02 CARAT	E	VS 1	57.2%	57%	Pointed	EXCELLENT	EXCELLENT	NONE	IGI LG759524094		
IGI Report No LG759524094	6.19 X 6.99 X 4.00 MM	HEART BRILLIANT	Color Grade	Depth	Table	Girdle	Slightly Thick To Thick (Faceted)	Culet	Polish	Symmetry	Fluorescence	Inscription(s)

Comments: This Laboratory Grown Diamond was created by Chemical Vapor Deposition (CVD) growth process. Type IIa