



ELECTRONIC COPY

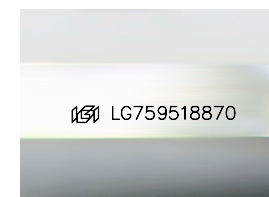
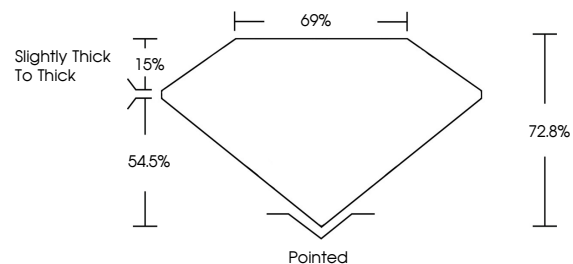
LG759518870
Report verification at igi.org



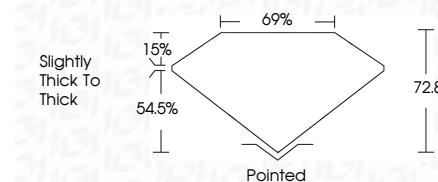
December 22, 2025
IGI Report Number **LG759518870**
Description **LABORATORY GROWN DIAMOND**
Shape and Cutting Style **PRINCESS CUT**
Measurements **7.10 X 7.10 X 5.17 MM**
GRADING RESULTS
Carat Weight **2.33 CARATS**
Color Grade **E**
Clarity Grade **VVS 2**

December 22, 2025
IGI Report Number **LG759518870**
Description **LABORATORY GROWN DIAMOND**
Shape and Cutting Style **PRINCESS CUT**
Measurements **7.10 X 7.10 X 5.17 MM**
GRADING RESULTS
Carat Weight **2.33 CARATS**
Color Grade **E**
Clarity Grade **VVS 2**

PROPORTIONS



Sample Image Used



ADDITIONAL GRADING INFORMATION

Polish **EXCELLENT**
Symmetry **EXCELLENT**
Fluorescence **NONE**
Inscription(s) **IGI LG759518870**

Comments: This Laboratory Grown Diamond was created by Chemical Vapor Deposition (CVD) growth process.
Type IIa

ADDITIONAL GRADING INFORMATION

Polish **EXCELLENT**
Symmetry **EXCELLENT**
Fluorescence **NONE**
Inscription(s) **IGI LG759518870**

Comments: This Laboratory Grown Diamond was created by Chemical Vapor Deposition (CVD) growth process.
Type IIa

COLOR

D E F G H I J Faint Very Light Light

CLARITY

FL	IF	VVS ¹⁻²	VS ¹⁻²	SI ¹⁻²	I ¹⁻³
Flawless	Internally Flawless	Very Very Slightly Included	Very Slightly Included	Slightly Included	Included



IGI



December 22, 2025
IGI Report No **LG759518870**
PRINCESS CUT
7.10 X 7.10 X 5.17 MM
Carat Weight **2.33 CARATS**
Color Grade **E**
Clarity Grade **VVS 2**
Table **72.0%**
Depth **69%**
Girdle **Slightly Thick To Thick**
Culet **Pointed**
Polish **EXCELLENT**
Symmetry **EXCELLENT**
Fluorescence **NONE**
Inscription(s) **IGI LG759518870**
Comments: This Laboratory Grown Diamond was created by Chemical Vapor Deposition (CVD) growth process.
Type IIa