



December 23, 2025

IGI Report Number **LG759517468**

ROUND BRILLIANT

LABORATORY GROWN DIAMOND

5.14 - 5.18 X 3.18 MM

| | |
|----------------|------------------------|
| Carat Weight | 0.53 CARAT |
| Color Grade | E |
| Clarity Grade | VVS 1 |
| Cut Grade | EXCELLENT |
| Polish | VERY GOOD |
| Symmetry | VERY GOOD |
| Fluorescence | NONE |
| Inscription(s) | IGI LG759517468 |

Comments: This Laboratory Grown Diamond was created by Chemical Vapor Deposition (CVD) growth process. Type IIa

LABORATORY GROWN DIAMOND REPORT

December 23, 2025

IGI Report Number **LG759517468**

Description **LABORATORY GROWN DIAMOND**

Shape and Cutting Style **ROUND BRILLIANT**

Measurements **5.14 - 5.18 X 3.18 MM**

GRADING RESULTS

Carat Weight **0.53 CARAT**

Color Grade **E**

Clarity Grade **VVS 1**

Cut Grade **EXCELLENT**

ADDITIONAL GRADING INFORMATION

Polish **VERY GOOD**

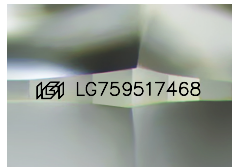
Symmetry **VERY GOOD**

Fluorescence **NONE**

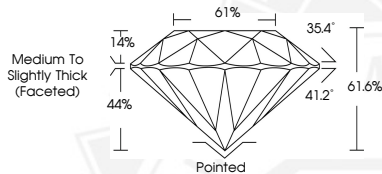
Inscription(s) **IGI LG759517468**

Comments: This Laboratory Grown Diamond was created by Chemical Vapor Deposition (CVD) growth process.

Type IIa



Sample Image Used



December 23, 2025

IGI Report Number **LG759517468**

ROUND BRILLIANT

LABORATORY GROWN DIAMOND

5.14 - 5.18 X 3.18 MM

| | |
|----------------|------------------------|
| Carat Weight | 0.53 CARAT |
| Color Grade | E |
| Clarity Grade | VVS 1 |
| Cut Grade | EXCELLENT |
| Polish | VERY GOOD |
| Symmetry | VERY GOOD |
| Fluorescence | NONE |
| Inscription(s) | IGI LG759517468 |

Comments: This Laboratory Grown Diamond was created by Chemical Vapor Deposition (CVD) growth process. Type IIa



THIS DOCUMENT WAS PRODUCED WITH THE FOLLOWING SECURITY MEASURES: SPECIAL DOCUMENT PAPER, INK SCREENS, WATERMARK, BACKGROUND DESIGNS, HOLOGRAM AND OTHER SECURITY FEATURES NOT LISTED AND DO EXCEED DOCUMENT SECURITY INDUSTRY GUIDELINES.