



December 24, 2025

IGI Report Number **LG759517367**

ROUND BRILLIANT

LABORATORY GROWN DIAMOND

5.08 - 5.14 X 3.26 MM

| | |
|----------------|------------------------|
| Carat Weight | 0.53 CARAT |
| Color Grade | E |
| Clarity Grade | VVS 2 |
| Cut Grade | VERY GOOD |
| Polish | VERY GOOD |
| Symmetry | VERY GOOD |
| Fluorescence | NONE |
| Inscription(s) | IGI LG759517367 |

Comments: This Laboratory Grown Diamond was created by Chemical Vapor Deposition (CVD) growth process. Type IIa

LABORATORY GROWN DIAMOND REPORT

December 24, 2025

IGI Report Number **LG759517367**

Description **LABORATORY GROWN DIAMOND**

Shape and Cutting Style **ROUND BRILLIANT**

Measurements **5.08 - 5.14 X 3.26 MM**

GRADING RESULTS

Carat Weight **0.53 CARAT**

Color Grade **E**

Clarity Grade **VVS 2**

Cut Grade **VERY GOOD**

ADDITIONAL GRADING INFORMATION

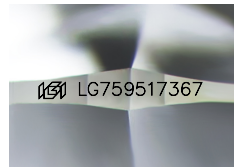
Polish **VERY GOOD**

Symmetry **VERY GOOD**

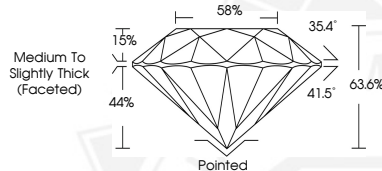
Fluorescence **NONE**

Inscription(s) **IGI LG759517367**

Comments: This Laboratory Grown Diamond was created by Chemical Vapor Deposition (CVD) growth process. Type IIa



Sample Image Used



December 24, 2025

IGI Report Number **LG759517367**

ROUND BRILLIANT

LABORATORY GROWN DIAMOND

5.08 - 5.14 X 3.26 MM

| | |
|----------------|------------------------|
| Carat Weight | 0.53 CARAT |
| Color Grade | E |
| Clarity Grade | VVS 2 |
| Cut Grade | VERY GOOD |
| Polish | VERY GOOD |
| Symmetry | VERY GOOD |
| Fluorescence | NONE |
| Inscription(s) | IGI LG759517367 |

Comments: This Laboratory Grown Diamond was created by Chemical Vapor Deposition (CVD) growth process. Type IIa



THIS DOCUMENT WAS PRODUCED WITH THE FOLLOWING SECURITY MEASURES: SPECIAL DOCUMENT PAPER, INK SCREENS, WATERMARK, BACKGROUND DESIGNS, HOLOGRAM AND OTHER SECURITY FEATURES NOT LISTED AND DO EXCEED DOCUMENT SECURITY INDUSTRY GUIDELINES.