



**ELECTRONIC COPY**

## LABORATORY GROWN DIAMOND REPORT

LG759517197  
Report verification at [igi.org](https://igi.org)

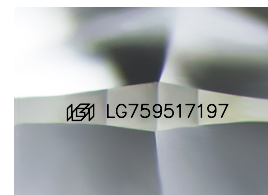
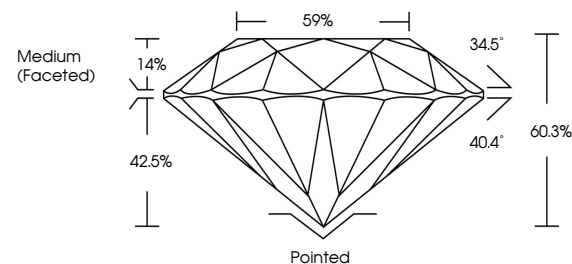
December 26, 2025	
IGI Report Number	LG759517197
Description	LABORATORY GROWN DIAMOND
Shape and Cutting Style	ROUND BRILLIANT
Measurements	7.47 - 7.51 X 4.52 MM
GRADING RESULTS	
Carat Weight	1.57 CARAT
Color Grade	D
Clarity Grade	VVS 2
Cut Grade	IDEAL

### ADDITIONAL GRADING INFORMATION

Polish	EXCELLENT
Symmetry	EXCELLENT
Fluorescence	NONE
Inscription(s)	15 LG759517197

Comments: As Grown - No indication of post-growth treatment.  
This Laboratory Grown Diamond was created by High Pressure High Temperature (HPHT) growth process.  
Type II

## PROPORTIONS



Sample Image Used

COLOR

D E F G H I J Faint Very Light Light

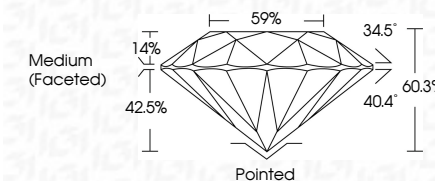
## CLARITY

FL	IF	VVS <sup>1-2</sup>	VS <sup>1-2</sup>	SI <sup>1-2</sup>	I <sup>1-3</sup>
Flawless	Internally Flawless	Very Very Slightly Included	Very Slightly Included	Slightly Included	Included

## LABORATORY GROWN DIAMOND REPORT



December 26, 2025	
IGI Report Number	LG759517197
Description	LABORATORY GROWN DIAMOND
Shape and Cutting Style	ROUND BRILLIANT
Measurements	7.47 - 7.51 X 4.52 MM
GRADING RESULTS	
Carat Weight	1.57 CARAT
Color Grade	D
Clarity Grade	VVS 2
Cut Grade	IDEAL



### ADDITIONAL GRADING INFORMATION

Polish	EXCELLENT
Symmetry	EXCELLENT
Fluorescence	NONE
Inscription(s)	<del>LG</del> LG759517197
<p>Comments: As Grown - No indication of post-growth treatment.</p> <p>This Laboratory Grown Diamond was created by High Pressure High Temperature (HPHT) growth process.</p> <p>Type II</p>	



© IGI 2020, International Gemological Institute

FD - 10 20



THIS DOCUMENT WAS PRODUCED WITH THE FOLLOWING SECURITY MEASURES: SPECIAL DOCUMENT PAPER, INK SCREENS, WATERMARK, BACKGROUND DESIGNS, HOLOGRAM AND OTHER SECURITY FEATURES NOT LISTED AND DO EXCEED DOCUMENT SECURITY INDUSTRY GUIDELINE

**www.igi.org**

December 26, 2025  
IGI Report No LG759517197  
ROUND BRILLIANT

7.47 - 7.51 X 4.52 MM

7.47 - 7.51 X 4.52 MM  
Carat Weight 1.57 CARAT

Catali Weiglin	1.97 Catal
Color Grade	D

	Clarity Grade	WS 2
1		
2		
3		
4		
5		
6		
7		
8		
9		
10		

Cut Grade	IDEAL
Depth	40-99%

Depth	60.3%
Table	59%

Girdle

[illegible]

Culet	Pointed
Polish	EXCELLENT

Posit  
Symmetry

Fluorescence	NONE
Inscription(s)	1681 G759517197

Registration (\$)

**Comments:**  
As Grown - No Indication of post-growth

**treatment.** This Laboratory Grown Diamond was

in the laboratory. Growth conditions were created by High Pressure High Temperature (HPHT) growth process.

Type II