



ELECTRONIC COPY

LABORATORY GROWN DIAMOND REPORT

LG759517195
Report verification at igi.org

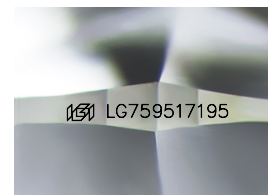
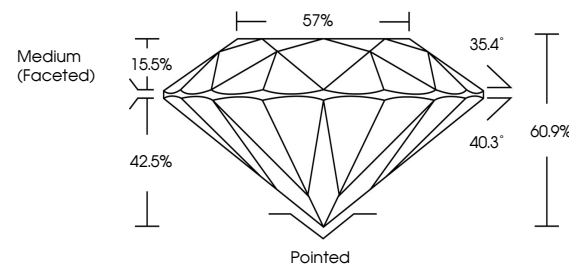
December 22, 2025	
IGI Report Number	LG759517195
Description	LABORATORY GROWN DIAMOND
Shape and Cutting Style	ROUND BRILLIANT
Measurements	7.42 - 7.46 X 4.53 MM
GRADING RESULTS	
Carat Weight	1.54 CARAT
Color Grade	D
Clarity Grade	VVS 2
Cut Grade	IDEAL

ADDITIONAL GRADING INFORMATION

Polish	EXCELLENT
Symmetry	EXCELLENT
Fluorescence	NONE
Inscription(s)	151 LG759517195

Comments: As Grown - No indication of post-growth treatment.
This Laboratory Grown Diamond was created by High Pressure High Temperature (HPHT) growth process.
Type II

PROPORTIONS



Sample Image Used

COLOR

D E F G H I J Faint Very Light Light

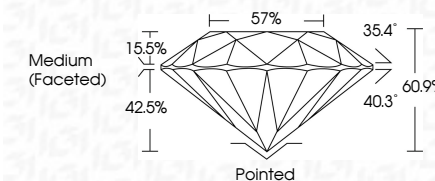
CLARITY

FL	IF	VVS ¹⁻²	VS ¹⁻²	SI ¹⁻²	I ¹⁻³
Flawless	Internally Flawless	Very Very Slightly Included	Very Slightly Included	Slightly Included	Included

LABORATORY GROWN DIAMOND REPORT



December 22, 2025	
IGI Report Number	LG759517195
Description	LABORATORY GROWN DIAMOND
Shape and Cutting Style	ROUND BRILLIANT
Measurements	7.42 - 7.46 X 4.53 MM
GRADING RESULTS	
Carat Weight	1.54 CARAT
Color Grade	D
Clarity Grade	VVS 2
Cut Grade	IDEAL



ADDITIONAL GRADING INFORMATION

Polish	EXCELLENT
Symmetry	EXCELLENT
Fluorescence	NONE
Inscription(s)	LG LG759517195
Comments: As Grown - No indication of post-growth treatment.	
This Laboratory Grown Diamond was created by High Pressure High Temperature (HPHT) growth process.	
Type II	



© IGI 2020, International Gemological Institute

FD - 10 20



THIS DOCUMENT WAS PRODUCED WITH THE FOLLOWING SECURITY MEASURES: SPECIAL DOCUMENT PAPER, INK SCREENS, WATERMARK, BACKGROUND DESIGNS, HOLOGRAM AND OTHER SECURITY FEATURES NOT LISTED AND DO EXCEED DOCUMENT SECURITY INDUSTRY GUIDELINE

www.igi.org

December 22, 2025
IGI Report No LG759517195
ROUND BRILLIANT

7.42 - 7.46 X 4.53 MM

7.42 - 7.46 X 4.53 MM
Carat Weight
1.54 CARAT

Catali Weight	1.54 Catal
Color Grade	D

Clarity Grade	WS2
FL	
IF	
VVS	
VS	
SI	
I	

Cut Grade	IDEAL
-----------	-------

Depth	60.9%
Total	57%

Medium (Faceted)

Pointed	Excellent
Culet	
Polish	

Polystyrene
Symmetry

Fluorescence	NONE
Fluorescence	NONE

Description(s)

Comments: No indication of post-growth

This laboratory grown Diamond was

Created by High Pressure High Temperature (HPHT) growth process

Type II