



**ELECTRONIC COPY**

## LABORATORY GROWN DIAMOND REPORT

LG759517179  
Report verification at [igi.org](https://igi.org)

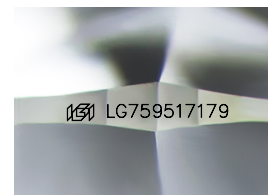
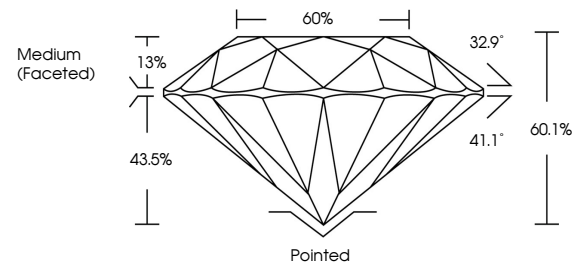
|                         |                          |
|-------------------------|--------------------------|
| December 23, 2025       |                          |
| IGI Report Number       | LG759517179              |
| Description             | LABORATORY GROWN DIAMOND |
| Shape and Cutting Style | ROUND BRILLIANT          |
| Measurements            | 8.16 - 8.20 X 4.92 MM    |
| GRADING RESULTS         |                          |
| Carat Weight            | 2.01 CARATS              |
| Color Grade             | E                        |
| Clarity Grade           | VVS 2                    |
| Cut Grade               | IDEAL                    |

### ADDITIONAL GRADING INFORMATION

|                |   |
|----------------|---|
| Polish         | EXCELLENT   |
| Symmetry       | EXCELLENT   |
| Fluorescence   | NONE  |
| Inscription(s) |  LG759517179 |

Comments: This Laboratory Grown Diamond was created by Chemical Vapor Deposition (CVD) growth process.  
Type IIa

## PROPORTIONS



Sample Image Used

## COLOR

D E F G H I J Faint Very Light Light

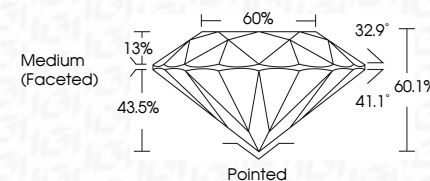
## CLARITY

| FL       | IF                  | VVS <sup>1-2</sup>          | VS <sup>1-2</sup>      | SI <sup>1-2</sup> | I <sup>1-3</sup> |
|----------|---------------------|-----------------------------|------------------------|-------------------|------------------|
| Flawless | Internally Flawless | Very Very Slightly Included | Very Slightly Included | Slightly Included | Included         |

## LABORATORY GROWN DIAMOND REPORT



|                         |                          |
|-------------------------|--------------------------|
| December 23, 2025       |                          |
| IGI Report Number       | LG759517179              |
| Description             | LABORATORY GROWN DIAMOND |
| Shape and Cutting Style | ROUND BRILLIANT          |
| Measurements            | 8.16 - 8.20 X 4.92 MM    |
| GRADING RESULTS         |                          |
| Carat Weight            | 2.01 CARATS              |
| Color Grade             | E                        |
| Clarity Grade           | VVS 2                    |
| Cut Grade               | IDEAL                    |



### ADDITIONAL GRADING INFORMATION

|   |   |
|---|---|
| Polish  | EXCELLENT   |
| Symmetry  | EXCELLENT   |
| Fluorescence  | NONE  |
| Inscription(s)  |  LG759517179 |
| <p>Comments: This Laboratory Grown Diamond was created by Chemical Vapor Deposition (CVD) growth process.</p> <p>Type IIa</p> |   |



© IGI 2020, International Gemological Institute

FD - 10 20



THIS DOCUMENT WAS PRODUCED WITH THE FOLLOWING SECURITY MEASURES: SPECIAL DOCUMENT PAPER, INK SCREENS, WATERMARK, BACKGROUND DESIGNS, HOLOGRAM AND OTHER SECURITY FEATURES NOT LISTED AND DO EXCEED DOCUMENT SECURITY INDUSTRY GUIDELINES

**www.igi.org**

December 23, 2025  
IGI Report No LG759517179  
ROUND BRILLIANT

|                 |                       |             |               |             |       |                |          |              |           |      |                 |
|-----------------|-----------------------|-------------|---------------|-------------|-------|----------------|----------|--------------|-----------|------|-----------------|
| ROUND BRILLIANT | 8.16 - 8.20 X 4.92 MM | 2.01 CARATS | VVS 2         | IDEAL       | 60%   | Medium Faceted | Pointed  | Excellent    | Excellent | None | 60% (275651712) |
|                 | Carat Weight          |             | Clarity Grade | Color Grade | Depth | Table          | Symmetry | Fluorescence |           |      |                 |
|                 | Color Grade           |             | Cut Grade     |             |       | Grade          | Quiet    |              |           |      |                 |

**Comments:**  
This Laboratory Grown Diamond was  
created by Chemical Vapor Deposition  
(CVD) growth process.