

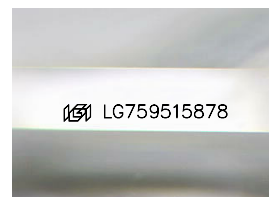
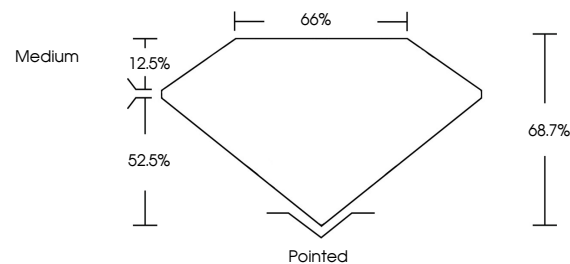


**ELECTRONIC COPY**

## LABORATORY GROWN DIAMOND REPORT

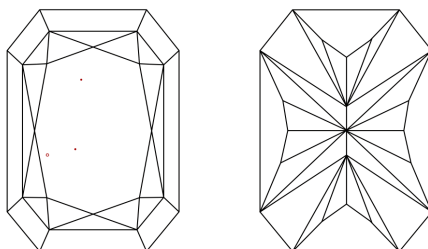
LG759515878  
Report verification at [lgi.org](https://lgi.org)

## PROPORTIONS



Sample Image Used

## CLARITY CHARACTERISTICS



## KEY TO SYMBOLS

Red symbols indicate internal characteristics.  
Green symbols indicate external characteristics.

## COLOR

D E F G H I J Faint Very Light Light

## CLARITY

FL	IF	VVS <sup>1-2</sup>	VS <sup>1-2</sup>	SI <sup>1-2</sup>	I <sup>1-3</sup>
Flawless	Internally Flawless	Very Very Slightly Included	Very Slightly Included	Slightly Included	Included

## LABORATORY GROWN DIAMOND REPORT



December 24, 2025

IGI Report Number **LG759515878**Description **LABORATORY GROWN DIAMOND**

Shape and Cutting Style

CUT CORNERED  
RECTANGULAR MODIFIED  
BRILLIANT

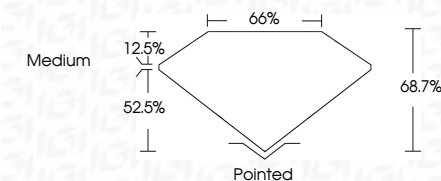
Measurements 9.64 X 6.58 X 4.52 MM

## GRADING RESULTS

Carat Weight **2.51 CARATS**

Color Grade D

Clarity Grade VS 1



### ADDITIONAL GRADING INFORMATION

Polish **EXCELLENT**Symmetry **EXCELLENT**Fluorescence **NONE**Inscription(s)  LG759515878

Comments: This Laboratory Grown Diamond was created by Chemical Vapor Deposition (CVD) growth process.  
Type IIa



IG



© IGI 2020, International Gemological Institute

FD - 10 20

**www.igi.org**

THIS DOCUMENT WAS PRODUCED WITH THE FOLLOWING SECURITY MEASURES: SPECIAL DOCUMENT PAPER, INK SCREENS, WATERMARK, BACKGROUND DESIGNS, HOLOGRAM AND OTHER SECURITY FEATURES NOT LISTED AND DO EXCEED DOCUMENT SECURITY INDUSTRY GUIDELINES

December 24, 2025	GI Report No LG759515878	GI CUT CORNERED RECT, MODIFIED BRILLIANT
6.64 X 6.58 X 4.52 MM	Carat Weight	2.51 CARATS
Color Grade	D	
Clarity Grade	Vs 1	
Depth	68.7%	
Table	65%	
Grade	Medium	
Polish	Polished	
Symmetry	EXCELLENT	
Fluorescence	EXCELLENT	
Inscription(s)	NONE	
	689 LG759515878	
<b>Comments:</b> This Laboratory Grown Diamond was created by Chemical Vapor Deposition (CVD) growth process, type IIa		