



ELECTRONIC COPY

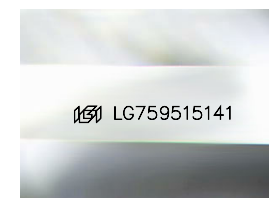
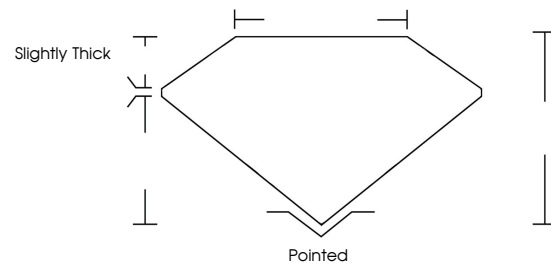
LG759515141
Report verification at igi.org



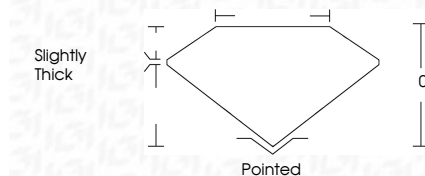
December 30, 2025
IGI Report Number **LG759515141**
Description **LABORATORY GROWN DIAMOND**
Shape and Cutting Style **FREEFORM MODIFIED BRILLIANT**
Measurements **7.62 X 5.20 X 3.53 MM**
GRADING RESULTS
Carat Weight **1.08 CARAT**
Color Grade **E**
Clarity Grade **VS 1**

December 30, 2025
IGI Report Number **LG759515141**
Description **LABORATORY GROWN DIAMOND**
Shape and Cutting Style **FREEFORM MODIFIED BRILLIANT**
Measurements **7.62 X 5.20 X 3.53 MM**
GRADING RESULTS
Carat Weight **1.08 CARAT**
Color Grade **E**
Clarity Grade **VS 1**

PROPORTIONS



Sample Image Used



ADDITIONAL GRADING INFORMATION

Polish **VERY GOOD**
Symmetry **VERY GOOD**
Fluorescence **NONE**
Inscription(s) **IGI LG759515141**

Comments: This Laboratory Grown Diamond was created by Chemical Vapor Deposition (CVD) growth process.
Type IIa

ADDITIONAL GRADING INFORMATION

Polish **VERY GOOD**
Symmetry **VERY GOOD**
Fluorescence **NONE**
Inscription(s) **IGI LG759515141**
Comments: This Laboratory Grown Diamond was created by Chemical Vapor Deposition (CVD) growth process.
Type IIa

COLOR

D E F G H I J Faint Very Light Light

CLARITY

FL	IF	VS ¹⁻²	VS ¹⁻²	SI ¹⁻²	I ¹⁻³
Flawless	Internally Flawless	Very Very Slightly Included	Very Slightly Included	Slightly Included	Included



December 30, 2025
IGI Report No LG759515141
FREEFORM MODIFIED BRILLIANT
7.62 X 5.20 X 3.53 MM
1.08 CARAT
E
VS 1
0%
Slightly Thick
Pointed
Polish **VERY GOOD**
Symmetry **VERY GOOD**
Fluorescence **NONE**
Inscription(s) **IGI LG759515141**
Comments: This Laboratory Grown Diamond was created by Chemical Vapor Deposition (CVD) growth process.
Type IIa