



ELECTRONIC COPY

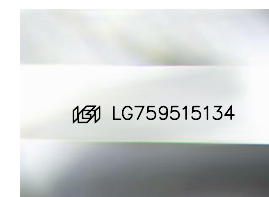
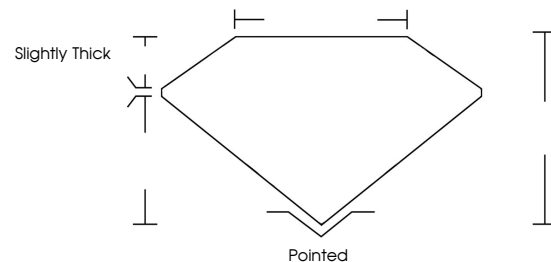
LG759515134
Report verification at igi.org



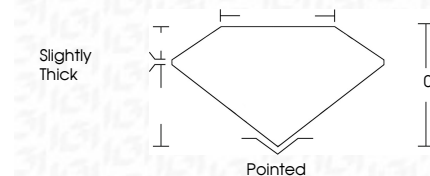
December 30, 2025
IGI Report Number **LG759515134**
Description **LABORATORY GROWN DIAMOND**
Shape and Cutting Style **FREEFORM MODIFIED BRILLIANT**
Measurements **7.60 X 5.29 X 3.51 MM**
GRADING RESULTS
Carat Weight **0.90 CARAT**
Color Grade **E**
Clarity Grade **VS 1**

December 30, 2025
IGI Report Number **LG759515134**
Description **LABORATORY GROWN DIAMOND**
Shape and Cutting Style **FREEFORM MODIFIED BRILLIANT**
Measurements **7.60 X 5.29 X 3.51 MM**
GRADING RESULTS
Carat Weight **0.90 CARAT**
Color Grade **E**
Clarity Grade **VS 1**

PROPORTIONS



Sample Image Used



ADDITIONAL GRADING INFORMATION

Polish **VERY GOOD**
Symmetry **VERY GOOD**
Fluorescence **NONE**
Inscription(s) **IGI LG759515134**

Comments: This Laboratory Grown Diamond was created by Chemical Vapor Deposition (CVD) growth process.
Type IIa

ADDITIONAL GRADING INFORMATION

Polish **VERY GOOD**
Symmetry **VERY GOOD**
Fluorescence **NONE**
Inscription(s) **IGI LG759515134**
Comments: This Laboratory Grown Diamond was created by Chemical Vapor Deposition (CVD) growth process.
Type IIa

COLOR

D E F G H I J Faint Very Light Light

CLARITY

FL	IF	VS ¹⁻²	VS ¹⁻²	SI ¹⁻²	I ¹⁻³
Flawless	Internally Flawless	Very Very Slightly Included	Very Slightly Included	Slightly Included	Included



IGI



December 30, 2025
IGI Report No LG759515134
FREEFORM MODIFIED BRILLIANT
7.60 X 5.29 X 3.51 MM
0.90 CARAT
E
VS 1
0%
Slightly Thick
Pointed
Polish **VERY GOOD**
Symmetry **VERY GOOD**
Fluorescence **NONE**
Inscription(s) **IGI LG759515134**
Comments: This Laboratory Grown Diamond was created by Chemical Vapor Deposition (CVD) growth process.
Type IIa