



ELECTRONIC COPY

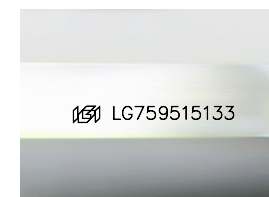
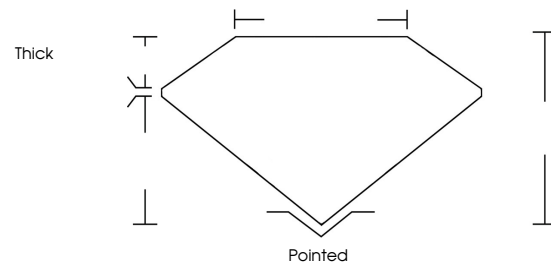
LG759515133
Report verification at igi.org



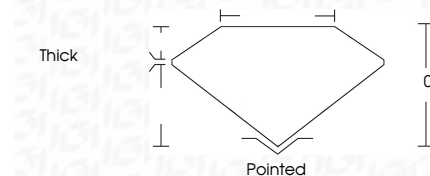
December 30, 2025
IGI Report Number **LG759515133**
Description **LABORATORY GROWN DIAMOND**
Shape and Cutting Style **FREEFORM MODIFIED BRILLIANT**
Measurements **7.50 X 5.47 X 3.69 MM**
GRADING RESULTS
Carat Weight **1.06 CARAT**
Color Grade **F**
Clarity Grade **VS 1**

December 30, 2025
IGI Report Number **LG759515133**
Description **LABORATORY GROWN DIAMOND**
Shape and Cutting Style **FREEFORM MODIFIED BRILLIANT**
Measurements **7.50 X 5.47 X 3.69 MM**
GRADING RESULTS
Carat Weight **1.06 CARAT**
Color Grade **F**
Clarity Grade **VS 1**

PROPORTIONS



Sample Image Used



ADDITIONAL GRADING INFORMATION

Polish **VERY GOOD**
Symmetry **VERY GOOD**
Fluorescence **NONE**
Inscription(s) **IGI LG759515133**

Comments: This Laboratory Grown Diamond was created by Chemical Vapor Deposition (CVD) growth process.
Type IIa

ADDITIONAL GRADING INFORMATION

Polish **VERY GOOD**
Symmetry **VERY GOOD**
Fluorescence **NONE**
Inscription(s) **IGI LG759515133**
Comments: This Laboratory Grown Diamond was created by Chemical Vapor Deposition (CVD) growth process.
Type IIa

COLOR

D E F G H I J Faint Very Light Light

CLARITY

FL	IF	VS ¹⁻²	VS ¹⁻²	SI ¹⁻²	I ¹⁻³
Flawless	Internally Flawless	Very Very Slightly Included	Very Slightly Included	Slightly Included	Included



IGI



December 30, 2025
IGI Report No LG759515133
FREEFORM MODIFIED BRILLIANT
7.50 X 5.47 X 3.69 MM
1.06 CARAT
F
VS 1
0%
0%
Thick
Pointed
Polish **VERY GOOD**
Symmetry **VERY GOOD**
Fluorescence **NONE**
Inscription(s) **IGI LG759515133**
Comments: This Laboratory Grown Diamond was created by Chemical Vapor Deposition (CVD) growth process.
Type IIa