



**ELECTRONIC COPY**

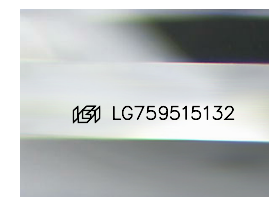
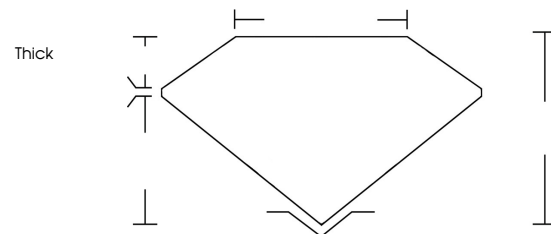
LG759515132  
Report verification at [igi.org](http://igi.org)



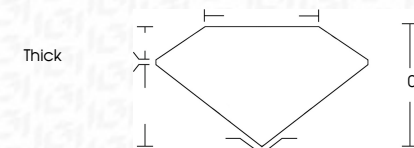
December 30, 2025  
IGI Report Number **LG759515132**  
Description **LABORATORY GROWN DIAMOND**  
Shape and Cutting Style **FREEFORM MIXED CUT**  
Measurements **7.70 X 5.59 X 3.53 MM**  
**GRADING RESULTS**  
Carat Weight **1.38 CARAT**  
Color Grade **E**  
Clarity Grade **VVS 2**

December 30, 2025  
IGI Report Number **LG759515132**  
Description **LABORATORY GROWN DIAMOND**  
Shape and Cutting Style **FREEFORM MIXED CUT**  
Measurements **7.70 X 5.59 X 3.53 MM**  
**GRADING RESULTS**  
Carat Weight **1.38 CARAT**  
Color Grade **E**  
Clarity Grade **VVS 2**

**PROPORTIONS**



Sample Image Used



**ADDITIONAL GRADING INFORMATION**  
Polish **VERY GOOD**  
Symmetry **VERY GOOD**  
Fluorescence **NONE**  
Inscription(s) **IGI LG759515132**  
Comments: This Laboratory Grown Diamond was created by Chemical Vapor Deposition (CVD) growth process.  
Type IIa

**COLOR**

D E F G H I J Faint Very Light Light

**CLARITY**

FL	IF	VVS <sup>1-2</sup>	VS <sup>1-2</sup>	SI <sup>1-2</sup>	I <sup>1-3</sup>
Flawless	Internally Flawless	Very Very Slightly Included	Very Slightly Included	Slightly Included	Included

**ADDITIONAL GRADING INFORMATION**

Polish **VERY GOOD**  
Symmetry **VERY GOOD**  
Fluorescence **NONE**  
Inscription(s) **IGI LG759515132**  
Comments: This Laboratory Grown Diamond was created by Chemical Vapor Deposition (CVD) growth process.  
Type IIa



December 30, 2025  
IGI Report No LG759515132  
**FREEFORM MIXED CUT**  
1.38 CARAT  
Color Grade **E**  
Clarity Grade **VVS 2**  
Depth **0%**  
Table **0%**  
Girdle **Thick**  
Culet  
Polish **VERY GOOD**  
Symmetry **VERY GOOD**  
Fluorescence **NONE**  
Inscription(s) **IGI LG759515132**  
Comments: This Laboratory Grown Diamond was created by Chemical Vapor Deposition (CVD) growth process.  
Type IIa