



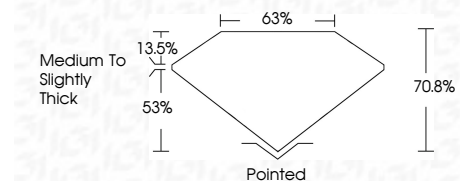
**ELECTRONIC COPY**

LG759510964  
Report verification at igi.org



March 12, 2026  
IGI Report Number **LG759510964**  
Description **LABORATORY GROWN DIAMOND**  
Shape and Cutting Style **TRAPEZE BRILLIANT CUT**  
Measurements **8.93 X 5.71 X 4.04 MM**

**GRADING RESULTS**  
Carat Weight **1.53 CARAT**  
Color Grade **D**  
Clarity Grade **VS 2**



**ADDITIONAL GRADING INFORMATION**  
Polish **EXCELLENT**  
Symmetry **EXCELLENT**  
Fluorescence **NONE**  
Inscription(s) **IGI LG759510964**  
Comments: This Laboratory Grown Diamond was created by Chemical Vapor Deposition (CVD) growth process. Type IIa



March 12, 2026  
IGI Report No LG759510964  
**TRAPEZE BRILLIANT CUT**  
8.93 X 5.71 X 4.04 MM  
1.53 CARAT  
D  
VS 2  
70.8%  
53%  
Medium to Slightly Thick  
Pointed  
EXCELLENT  
EXCELLENT  
NONE  
IGI LG759510964  
Comments: This Laboratory Grown Diamond was created by Chemical Vapor Deposition (CVD) growth process. Type IIa

**LABORATORY GROWN DIAMOND REPORT**

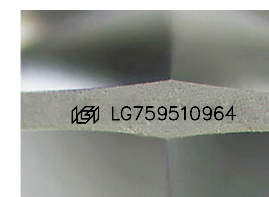
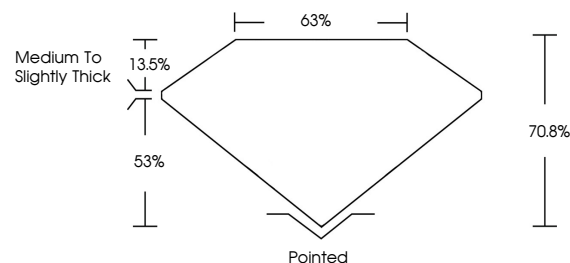
March 12, 2026  
IGI Report Number **LG759510964**  
Description **LABORATORY GROWN DIAMOND**  
Shape and Cutting Style **TRAPEZE BRILLIANT CUT**  
Measurements **8.93 X 5.71 X 4.04 MM**

**GRADING RESULTS**  
Carat Weight **1.53 CARAT**  
Color Grade **D**  
Clarity Grade **VS 2**

**ADDITIONAL GRADING INFORMATION**  
Polish **EXCELLENT**  
Symmetry **EXCELLENT**  
Fluorescence **NONE**  
Inscription(s) **IGI LG759510964**

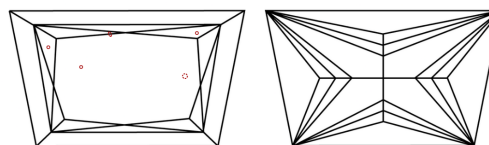
Comments: This Laboratory Grown Diamond was created by Chemical Vapor Deposition (CVD) growth process. Type IIa

**PROPORTIONS**



Sample Image Used

**CLARITY CHARACTERISTICS**



**KEY TO SYMBOLS**

Red symbols indicate internal characteristics.  
Green symbols indicate external characteristics.

**COLOR**

D E F G H I J Faint Very Light Light

**CLARITY**

FL	IF	VS <sup>1-2</sup>	VS <sup>1-2</sup>	SI <sup>1-2</sup>	I <sup>1-3</sup>
Flawless	Internally Flawless	Very Very Slightly Included	Very Slightly Included	Slightly Included	Included

