



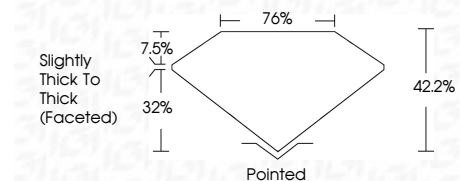
ELECTRONIC COPY

LG759510959
Report verification at igi.org



March 12, 2026
IGI Report Number **LG759510959**
Description **LABORATORY GROWN DIAMOND**
Shape and Cutting Style **HALF MOON BRILLIANT**
Measurements **9.44 X 13.80 X 5.82 MM**

GRADING RESULTS
Carat Weight **5.05 CARATS**
Color Grade **E**
Clarity Grade **VVS 2**



ADDITIONAL GRADING INFORMATION
Polish **EXCELLENT**
Symmetry **EXCELLENT**
Fluorescence **NONE**
Inscription(s) **IGI LG759510959**
Comments: This Laboratory Grown Diamond was created by Chemical Vapor Deposition (CVD) growth process. Type IIa



March 12, 2026
IGI Report No LG759510959
HALF MOON BRILLIANT
9.44 X 13.80 X 5.82 MM
5.05 CARATS
E
VVS 2
76%
42.2%
32%
7.5%
Slightly Thick To Thick (Faceted)
Pointed
EXCELLENT
EXCELLENT
NONE
IGI LG759510959
Comments: This Laboratory Grown Diamond was created by Chemical Vapor Deposition (CVD) growth process. Type IIa

LABORATORY GROWN DIAMOND REPORT

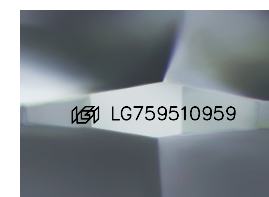
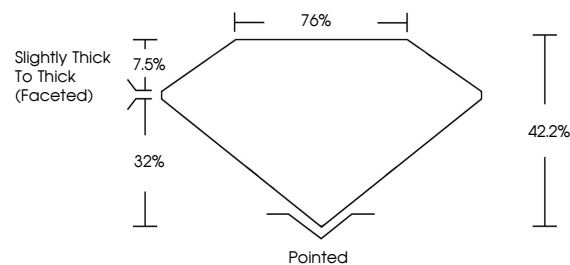
March 12, 2026
IGI Report Number **LG759510959**
Description **LABORATORY GROWN DIAMOND**
Shape and Cutting Style **HALF MOON BRILLIANT**
Measurements **9.44 X 13.80 X 5.82 MM**

GRADING RESULTS
Carat Weight **5.05 CARATS**
Color Grade **E**
Clarity Grade **VVS 2**

ADDITIONAL GRADING INFORMATION
Polish **EXCELLENT**
Symmetry **EXCELLENT**
Fluorescence **NONE**
Inscription(s) **IGI LG759510959**

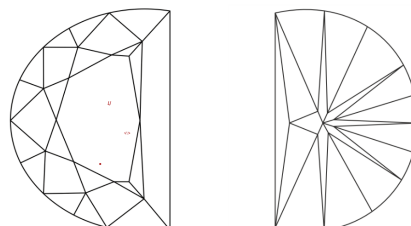
Comments: This Laboratory Grown Diamond was created by Chemical Vapor Deposition (CVD) growth process. Type IIa

PROPORTIONS



Sample Image Used

CLARITY CHARACTERISTICS



KEY TO SYMBOLS

Red symbols indicate internal characteristics.
Green symbols indicate external characteristics.

COLOR

D E F G H I J Faint Very Light Light

CLARITY

FL	IF	VVS ¹⁻²	VS ¹⁻²	SI ¹⁻²	I ¹⁻³
Flawless	Internally Flawless	Very Very Slightly Included	Very Slightly Included	Slightly Included	Included

