



ELECTRONIC COPY

LG759510890
Report verification at igi.org



March 11, 2026
IGI Report Number **LG759510890**
Description **LABORATORY GROWN DIAMOND**
Shape and Cutting Style **HALF MOON MODIFIED BRILLIANT**
Measurements **9.72 X 6.20 X 3.76 MM**
GRADING RESULTS
Carat Weight **1.50 CARAT**
Color Grade **D**
Clarity Grade **VS 1**

March 11, 2026
IGI Report Number **LG759510890**
Description **LABORATORY GROWN DIAMOND**
Shape and Cutting Style **HALF MOON MODIFIED BRILLIANT**
Measurements **9.72 X 6.20 X 3.76 MM**

GRADING RESULTS

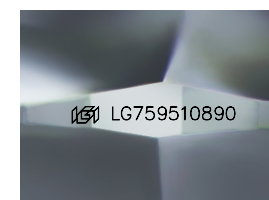
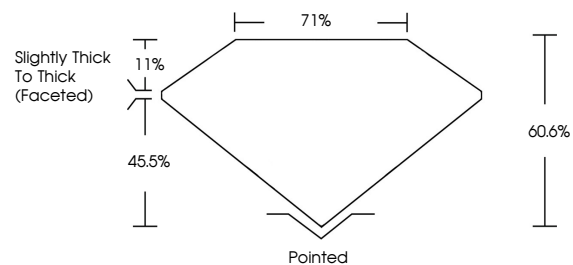
Carat Weight **1.50 CARAT**
Color Grade **D**
Clarity Grade **VS 1**

ADDITIONAL GRADING INFORMATION

Polish **EXCELLENT**
Symmetry **EXCELLENT**
Fluorescence **NONE**
Inscription(s) **IGI LG759510890**

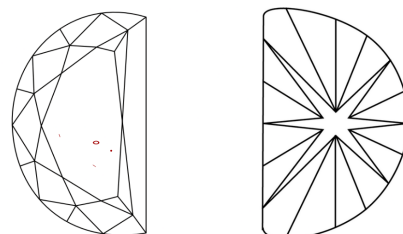
Comments: This Laboratory Grown Diamond was created by Chemical Vapor Deposition (CVD) growth process.
Type IIa

PROPORTIONS



Sample Image Used

CLARITY CHARACTERISTICS



KEY TO SYMBOLS

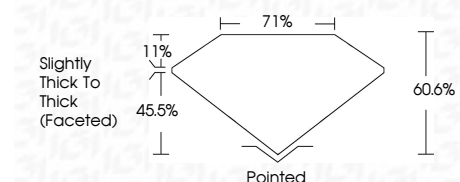
Red symbols indicate internal characteristics.
Green symbols indicate external characteristics.

COLOR

D E F G H I J Faint Very Light Light

CLARITY

FL	IF	VS ¹⁻²	VS ¹⁻²	SI ¹⁻²	I ¹⁻³
Flawless	Internally Flawless	Very Very Slightly Included	Very Slightly Included	Slightly Included	Included



ADDITIONAL GRADING INFORMATION

Polish **EXCELLENT**
Symmetry **EXCELLENT**
Fluorescence **NONE**
Inscription(s) **IGI LG759510890**
Comments: This Laboratory Grown Diamond was created by Chemical Vapor Deposition (CVD) growth process.
Type IIa



March 11, 2026
IGI Report No LG759510890
HALF MOON MODIFIED BRILLIANT
9.72 X 6.20 X 3.76 MM
1.50 CARAT
D
VS 1
60.6%
71%
Slightly Thick To Thick (Faceted)
Pointed
EXCELLENT
EXCELLENT
NONE
IGI LG759510890

Comments: This Laboratory Grown Diamond was created by Chemical Vapor Deposition (CVD) growth process.
Type IIa