



**ELECTRONIC COPY**

LG759510230  
Report verification at igi.org



January 22, 2026  
IGI Report Number **LG759510230**  
Description **LABORATORY GROWN DIAMOND**

Shape and Cutting Style **ROUND CORNERED  
RECTANGULAR MODIFIED  
BRILLIANT**

Measurements **8.86 X 5.54 X 3.39 MM**

**GRADING RESULTS**

Carat Weight **1.58 CARAT**  
Color Grade **F**  
Clarity Grade **VS 1**

**LABORATORY GROWN DIAMOND REPORT**

January 22, 2026  
IGI Report Number **LG759510230**  
Description **LABORATORY GROWN DIAMOND**  
Shape and Cutting Style **ROUND CORNERED  
RECTANGULAR MODIFIED  
BRILLIANT**  
Measurements **8.86 X 5.54 X 3.39 MM**

**GRADING RESULTS**

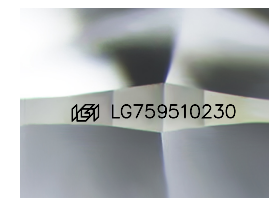
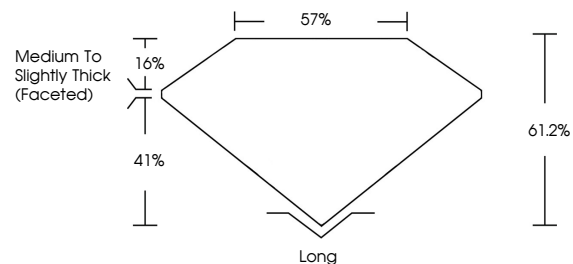
Carat Weight **1.58 CARAT**  
Color Grade **F**  
Clarity Grade **VS 1**

**ADDITIONAL GRADING INFORMATION**

Polish **EXCELLENT**  
Symmetry **EXCELLENT**  
Fluorescence **NONE**  
Inscription(s) **IGI LG759510230**

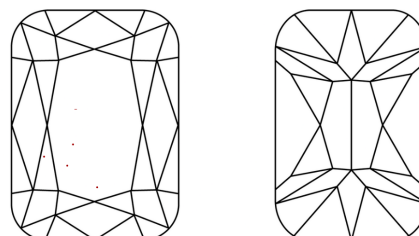
Comments: This Laboratory Grown Diamond was created by Chemical Vapor Deposition (CVD) growth process. Type IIa

**PROPORTIONS**



Sample Image Used

**CLARITY CHARACTERISTICS**



**KEY TO SYMBOLS**

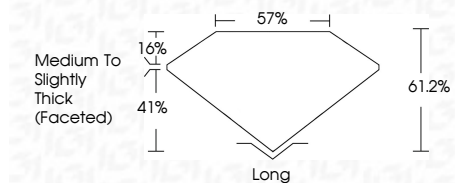
Red symbols indicate internal characteristics.  
Green symbols indicate external characteristics.

**COLOR**

D E F G H I J Faint Very Light Light

**CLARITY**

FL	IF	VS <sup>1-2</sup>	VS <sup>1-2</sup>	SI <sup>1-2</sup>	I <sup>1-3</sup>
Flawless	Internally Flawless	Very Very Slightly Included	Very Slightly Included	Slightly Included	Included



**ADDITIONAL GRADING INFORMATION**

Polish **EXCELLENT**  
Symmetry **EXCELLENT**  
Fluorescence **NONE**  
Inscription(s) **IGI LG759510230**  
Comments: This Laboratory Grown Diamond was created by Chemical Vapor Deposition (CVD) growth process. Type IIa



January 22, 2026  
IGI Report No LG759510230  
**ROUND CORNERED RECT. MODIFIED  
BRILLIANT**  
8.86 X 5.54 X 3.39 MM  
Carat Weight **1.58 CARAT**  
Color Grade **F**  
Clarity Grade **VS 1**  
Depth **61.2%**  
Table **57%**  
Girdle **Medium to Slightly Thick (Faceted)**  
Culet **Long**  
Polish **EXCELLENT**  
Symmetry **EXCELLENT**  
Fluorescence **NONE**  
Inscription(s) **IGI LG759510230**  
Comments: This Laboratory Grown Diamond was created by Chemical Vapor Deposition (CVD) growth process. Type IIa