



**ELECTRONIC COPY**

LG759510202  
Report verification at igi.org



January 22, 2026  
IGI Report Number **LG759510202**  
Description **LABORATORY GROWN DIAMOND**  
Shape and Cutting Style **CUSHION MODIFIED BRILLIANT**  
Measurements **8.90 X 5.63 X 3.43 MM**  
**GRADING RESULTS**  
Carat Weight **1.59 CARAT**  
Color Grade **F**  
Clarity Grade **VVS 2**

January 22, 2026  
IGI Report Number **LG759510202**  
Description **LABORATORY GROWN DIAMOND**  
Shape and Cutting Style **CUSHION MODIFIED BRILLIANT**  
Measurements **8.90 X 5.63 X 3.43 MM**

**GRADING RESULTS**

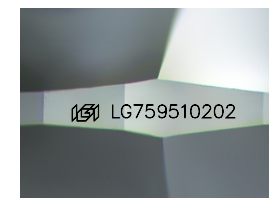
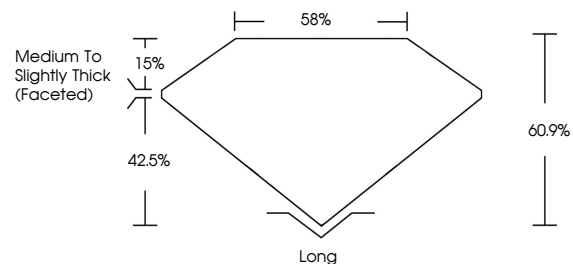
Carat Weight **1.59 CARAT**  
Color Grade **F**  
Clarity Grade **VVS 2**

**ADDITIONAL GRADING INFORMATION**

Polish **EXCELLENT**  
Symmetry **EXCELLENT**  
Fluorescence **NONE**  
Inscription(s) **IGI LG759510202**

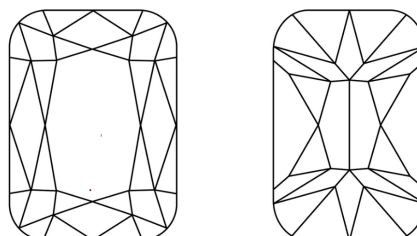
Comments: This Laboratory Grown Diamond was created by Chemical Vapor Deposition (CVD) growth process. Type IIa

**PROPORTIONS**



Sample Image Used

**CLARITY CHARACTERISTICS**



**KEY TO SYMBOLS**

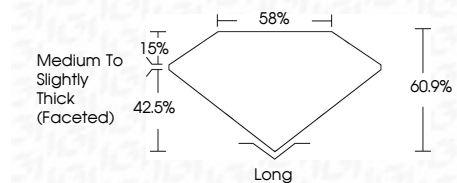
Red symbols indicate internal characteristics.  
Green symbols indicate external characteristics.

**COLOR**

D E F G H I J Faint Very Light Light

**CLARITY**

FL	IF	VVS <sup>1-2</sup>	VS <sup>1-2</sup>	SI <sup>1-2</sup>	I <sup>1-3</sup>
Flawless	Internally Flawless	Very Very Slightly Included	Very Slightly Included	Slightly Included	Included



**ADDITIONAL GRADING INFORMATION**

Polish **EXCELLENT**  
Symmetry **EXCELLENT**  
Fluorescence **NONE**  
Inscription(s) **IGI LG759510202**  
Comments: This Laboratory Grown Diamond was created by Chemical Vapor Deposition (CVD) growth process. Type IIa



January 22, 2026  
IGI Report No LG759510202  
**CUSHION MODIFIED BRILLIANT**  
8.90 X 5.63 X 3.43 MM  
1.59 CARAT  
F  
VVS 2  
60.9%  
42.5%  
15%  
Medium to Slightly Thick (Faceted)  
Long  
EXCELLENT  
EXCELLENT  
NONE  
IGI LG759510202  
Comments: This Laboratory Grown Diamond was created by Chemical Vapor Deposition (CVD) growth process. Type IIa