



**ELECTRONIC COPY**

LG759510033  
Report verification at igi.org



January 24, 2026

IGI Report Number **LG759510033**

Description **LABORATORY GROWN DIAMOND**

Shape and Cutting Style **TRIANGULAR BRILLIANT**

Measurements **11.93 X 11.41 X 6.24 MM**

**GRADING RESULTS**

Carat Weight **5.00 CARATS**

Color Grade **F**

Clarity Grade **VS 2**

January 24, 2026

IGI Report Number **LG759510033**

Description **LABORATORY GROWN DIAMOND**

Shape and Cutting Style **TRIANGULAR BRILLIANT**

Measurements **11.93 X 11.41 X 6.24 MM**

**GRADING RESULTS**

Carat Weight **5.00 CARATS**

Color Grade **F**

Clarity Grade **VS 2**

**ADDITIONAL GRADING INFORMATION**

Polish **EXCELLENT**

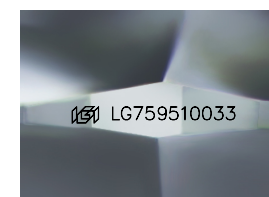
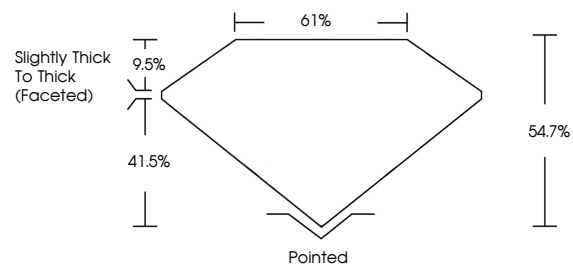
Symmetry **EXCELLENT**

Fluorescence **NONE**

Inscription(s) **IGI LG759510033**

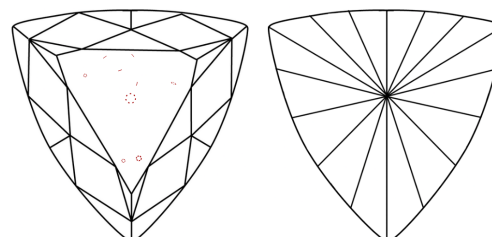
Comments: This Laboratory Grown Diamond was created by Chemical Vapor Deposition (CVD) growth process. Type IIa

**PROPORTIONS**



Sample Image Used

**CLARITY CHARACTERISTICS**



**KEY TO SYMBOLS**

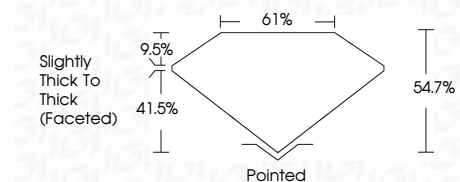
Red symbols indicate internal characteristics.  
Green symbols indicate external characteristics.

**COLOR**

D E F G H I J Faint Very Light Light

**CLARITY**

FL	IF	VS <sup>1-2</sup>	VS <sup>1-2</sup>	SI <sup>1-2</sup>	I <sup>1-3</sup>
Flawless	Internally Flawless	Very Very Slightly Included	Very Slightly Included	Slightly Included	Included



**ADDITIONAL GRADING INFORMATION**

Polish **EXCELLENT**

Symmetry **EXCELLENT**

Fluorescence **NONE**

Inscription(s) **IGI LG759510033**

Comments: This Laboratory Grown Diamond was created by Chemical Vapor Deposition (CVD) growth process. Type IIa



**IGI**



January 24, 2026  
IGI Report No LG759510033  
TRIANGULAR BRILLIANT  
11.93 X 11.41 X 6.24 MM  
5.00 CARATS  
F  
VS 2  
54.7%  
61%  
Slightly Thick To Thick (Faceted)  
Pointed  
EXCELLENT  
EXCELLENT  
NONE  
IGI LG759510033  
Comments: This Laboratory Grown Diamond was created by Chemical Vapor Deposition (CVD) growth process. Type IIa