



**ELECTRONIC COPY**

LG759509476  
Report verification at igi.org



February 6, 2026

IGI Report Number **LG759509476**

Description **LABORATORY GROWN DIAMOND**

Shape and Cutting Style **ROUND BRILLIANT**

Measurements **9.32 - 9.36 X 5.73 MM**

**GRADING RESULTS**

Carat Weight **3.10 CARATS**

Color Grade **E**

Clarity Grade **VVS 2**

Cut Grade **IDEAL**

February 6, 2026  
IGI Report Number **LG759509476**  
Description **LABORATORY GROWN DIAMOND**  
Shape and Cutting Style **ROUND BRILLIANT**  
Measurements **9.32 - 9.36 X 5.73 MM**

**GRADING RESULTS**

Carat Weight **3.10 CARATS**

Color Grade **E**

Clarity Grade **VVS 2**

Cut Grade **IDEAL**

**ADDITIONAL GRADING INFORMATION**

Polish **VERY GOOD**

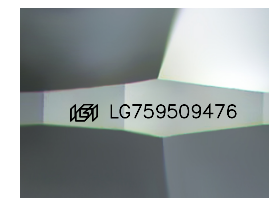
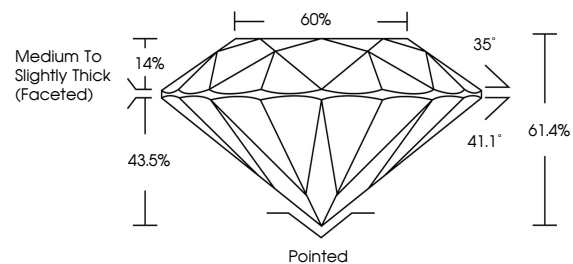
Symmetry **EXCELLENT**

Fluorescence **NONE**

Inscription(s) **IGI LG759509476**

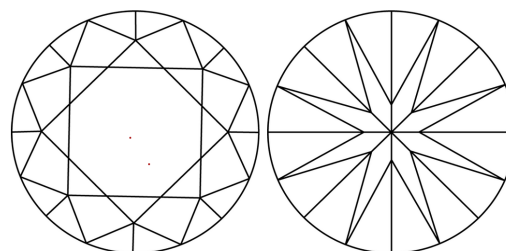
Comments: This Laboratory Grown Diamond was created by Chemical Vapor Deposition (CVD) growth process.  
Type IIa

**PROPORTIONS**



Sample Image Used

**CLARITY CHARACTERISTICS**



**KEY TO SYMBOLS**

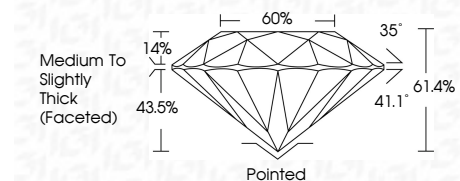
Red symbols indicate internal characteristics.  
Green symbols indicate external characteristics.

**COLOR**

D E F G H I J Faint Very Light Light

**CLARITY**

| FL       | IF                  | VVS <sup>1-2</sup>          | VS <sup>1-2</sup>      | SI <sup>1-2</sup> | I <sup>1-3</sup> |
|----------|---------------------|-----------------------------|------------------------|-------------------|------------------|
| Flawless | Internally Flawless | Very Very Slightly Included | Very Slightly Included | Slightly Included | Included         |



**ADDITIONAL GRADING INFORMATION**

Polish **VERY GOOD**

Symmetry **EXCELLENT**

Fluorescence **NONE**

Inscription(s) **IGI LG759509476**

Comments: This Laboratory Grown Diamond was created by Chemical Vapor Deposition (CVD) growth process.  
Type IIa



**IGI**



|                  |                           |              |             |               |           |       |       |                                    |         |           |           |              |                 |
|------------------|---------------------------|--------------|-------------|---------------|-----------|-------|-------|------------------------------------|---------|-----------|-----------|--------------|-----------------|
| February 6, 2026 | IGI Report No LG759509476 | 3.10 CARATS  | E           | VVS 2         | IDEAL     | 61.4% | 60%   | Medium To Slightly Thick (Faceted) | Pointed | VERY GOOD | EXCELLENT | NONE         | IGI LG759509476 |
| ROUND BRILLIANT  | 9.32 - 9.36 X 5.73 MM     | Carat Weight | Color Grade | Clarity Grade | Cut Grade | Depth | Table | Grade                              | Culet   | Polish    | Symmetry  | Fluorescence | Inscription(s)  |

Comments: This Laboratory Grown Diamond was created by Chemical Vapor Deposition (CVD) growth process.  
Type IIa