



February 5, 2026

IGI Report Number **LG759509375**

**ROUND BRILLIANT
LABORATORY GROWN DIAMOND
5.05 - 5.09 X 3.15 MM**

**0.49 CARAT
D
VVS 2
IDEAL
EXCELLENT
EXCELLENT
NONE
NONE**
Inscription(s) **IGI LG759509375**

Comments: As Grown - No indication of post-growth treatment. This Laboratory Grown Diamond was created by High Pressure High Temperature (HPHT) growth process. Type II

LABORATORY GROWN DIAMOND REPORT

February 5, 2026
IGI Report Number **LG759509375**
Description **LABORATORY GROWN DIAMOND**
Shape and Cutting Style **ROUND BRILLIANT**
Measurements **5.05 - 5.09 X 3.15 MM**

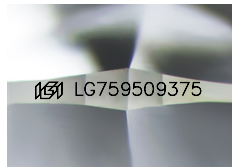
GRADING RESULTS

Carat Weight **0.49 CARAT**
Color Grade **D**
Clarity Grade **VVS 2**
Cut Grade **IDEAL**

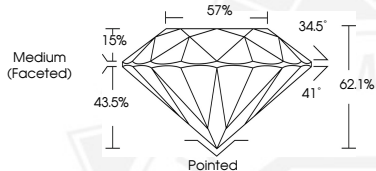
ADDITIONAL GRADING INFORMATION

Polish **EXCELLENT**
Symmetry **EXCELLENT**
Fluorescence **NONE**
Inscription(s) **IGI LG759509375**

Comments: As Grown - No indication of post-growth treatment. This Laboratory Grown Diamond was created by High Pressure High Temperature (HPHT) growth process. Type II



Sample Image Used



February 5, 2026

IGI Report Number **LG759509375**

**ROUND BRILLIANT
LABORATORY GROWN DIAMOND
5.05 - 5.09 X 3.15 MM**

**0.49 CARAT
D
VVS 2
IDEAL
EXCELLENT
EXCELLENT
NONE
NONE**
Inscription(s) **IGI LG759509375**

Comments: As Grown - No indication of post-growth treatment. This Laboratory Grown Diamond was created by High Pressure High Temperature (HPHT) growth process. Type II

THIS DOCUMENT WAS PRODUCED WITH THE FOLLOWING SECURITY MEASURES: SPECIAL DOCUMENT PAPER, INK SCREENS, WATERMARK, BACKGROUND DESIGNS, HOLOGRAM AND OTHER SECURITY FEATURES NOT LISTED AND DO EXCEED DOCUMENT SECURITY INDUSTRY GUIDELINES.

For terms & conditions and to verify this report, please visit www.igi.org