



ELECTRONIC COPY

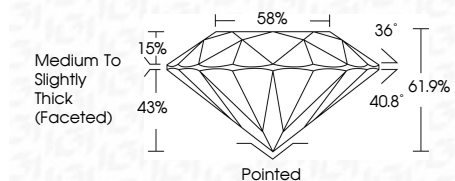
LG759508939
Report verification at igi.org



January 30, 2026
IGI Report Number LG759508939
Description LABORATORY GROWN DIAMOND
Shape and Cutting Style ROUND BRILLIANT
Measurements 6.83 - 6.87 X 4.24 MM

GRADING RESULTS

Carat Weight 1.23 CARAT
Color Grade E
Clarity Grade VVS 2
Cut Grade IDEAL

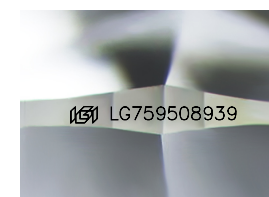


ADDITIONAL GRADING INFORMATION

Polish EXCELLENT
Symmetry EXCELLENT
Fluorescence NONE
Inscription(s) LG759508939
Comments: As Grown - No indication of post-growth treatment.
This Laboratory Grown Diamond was created by High Pressure High Temperature (HPHT) growth process.
Type II

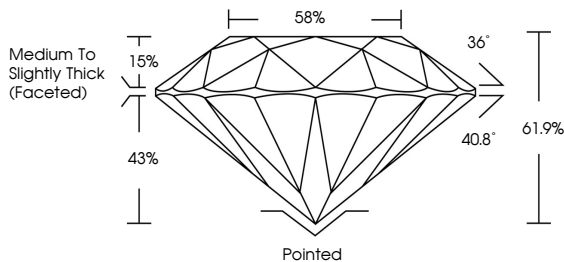


January 30, 2026
IGI Report No LG759508939
ROUND BRILLIANT
6.83 - 6.87 X 4.24 MM
1.23 CARAT
Color Grade E
Clarity Grade VVS 2
Cut Grade IDEAL
Depth 61.9%
Table 58%
Medium To Slightly Thick (Faceted)
Pointed
Polish EXCELLENT
Symmetry EXCELLENT
Fluorescence NONE
Inscription(s) IGI LG759508939
Comments: As Grown - No indication of post-growth treatment.
This Laboratory Grown Diamond was created by High Pressure High Temperature (HPHT) growth process.
Type II

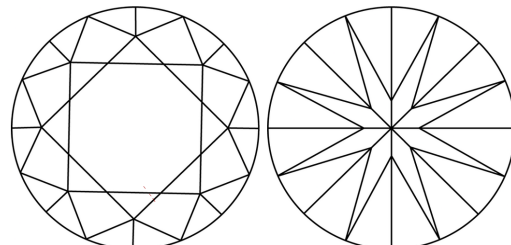


Sample Image Used

PROPORTIONS



CLARITY CHARACTERISTICS



KEY TO SYMBOLS

Red symbols indicate internal characteristics.
Green symbols indicate external characteristics.

COLOR

Table with color scale: D, E, F, G, H, I, J, Faint, Very Light, Light

CLARITY

Table with clarity scale: FL, IF, VVS 1-2, VS 1-2, SI 1-2, I 1-3, Flawless, Internally Flawless, Very Very Slightly Included, Very Slightly Included, Slightly Included, Included

