



January 30, 2026

IGI Report Number **LG759508657**

**ROUND BRILLIANT  
LABORATORY GROWN DIAMOND  
5.10 - 5.16 X 3.13 MM**

**0.49 CARAT  
D  
VS 1  
IDEAL  
EXCELLENT  
EXCELLENT  
NONE  
INSCRIPTION(S) LG759508657**

Comments: As Grown - No indication of post-growth treatment. This Laboratory Grown Diamond was created by High Pressure High Temperature (HPHT) growth process. Type II

**LABORATORY GROWN DIAMOND REPORT**

January 30, 2026

IGI Report Number

**LG759508657**

Description

**LABORATORY GROWN DIAMOND**

Shape and Cutting Style

**ROUND BRILLIANT**

Measurements

**5.10 - 5.16 X 3.13 MM**

**GRADING RESULTS**

Carat Weight

**0.49 CARAT**

Color Grade

**D**

Clarity Grade

**VS 1**

Cut Grade

**IDEAL**

**ADDITIONAL GRADING INFORMATION**

Polish

**EXCELLENT**

Symmetry

**EXCELLENT**

Fluorescence

**NONE**

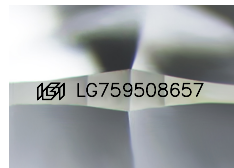
Inscription(s)

**LG759508657**

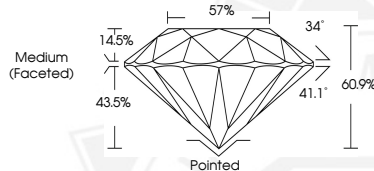
Comments: As Grown - No indication of post-growth treatment.

This Laboratory Grown Diamond was created by High Pressure High Temperature (HPHT) growth process.

Type II



Sample Image Used



January 30, 2026

IGI Report Number **LG759508657**

**ROUND BRILLIANT  
LABORATORY GROWN DIAMOND  
5.10 - 5.16 X 3.13 MM**

**0.49 CARAT  
D  
VS 1  
IDEAL  
EXCELLENT  
EXCELLENT  
NONE  
INSCRIPTION(S) LG759508657**

Comments: As Grown - No indication of post-growth treatment. This Laboratory Grown Diamond was created by High Pressure High Temperature (HPHT) growth process. Type II



THIS DOCUMENT WAS PRODUCED WITH THE FOLLOWING SECURITY MEASURES: SPECIAL DOCUMENT PAPER, INK SCREENS, WATERMARK, BACKGROUND DESIGNS, HOLOGRAM AND OTHER SECURITY FEATURES NOT LISTED AND DO EXCEED DOCUMENT SECURITY INDUSTRY GUIDELINES.