



**ELECTRONIC COPY**

LG759508571  
Report verification at igi.org



January 29, 2026

IGI Report Number **LG759508571**

Description **LABORATORY GROWN DIAMOND**

Shape and Cutting Style **ROUND BRILLIANT**

Measurements **8.21 - 8.25 X 4.88 MM**

**GRADING RESULTS**

Carat Weight **2.03 CARATS**

Color Grade **G**

Clarity Grade **VVS 2**

Cut Grade **EXCELLENT**

January 29, 2026  
IGI Report Number **LG759508571**  
Description **LABORATORY GROWN DIAMOND**  
Shape and Cutting Style **ROUND BRILLIANT**  
Measurements **8.21 - 8.25 X 4.88 MM**

**GRADING RESULTS**

Carat Weight **2.03 CARATS**

Color Grade **G**

Clarity Grade **VVS 2**

Cut Grade **EXCELLENT**

**ADDITIONAL GRADING INFORMATION**

Polish **EXCELLENT**

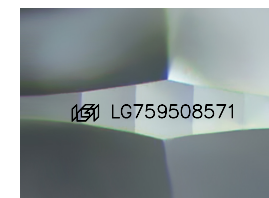
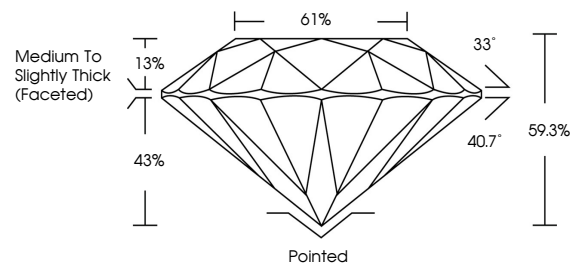
Symmetry **EXCELLENT**

Fluorescence **NONE**

Inscription(s) **LG759508571**

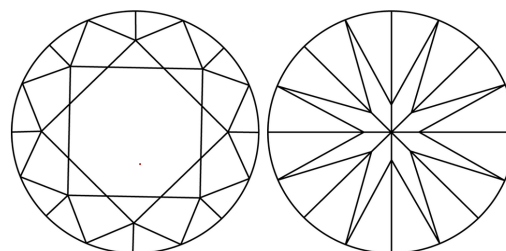
Comments: This Laboratory Grown Diamond was created by Chemical Vapor Deposition (CVD) growth process.  
Type IIa

**PROPORTIONS**



Sample Image Used

**CLARITY CHARACTERISTICS**



**KEY TO SYMBOLS**

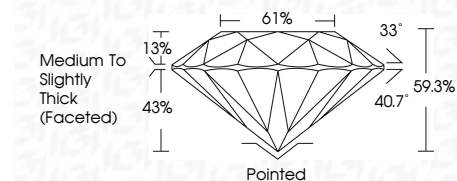
Red symbols indicate internal characteristics.  
Green symbols indicate external characteristics.

**COLOR**

D E F G H I J Faint Very Light Light

**CLARITY**

FL	IF	VVS <sup>1-2</sup>	VS <sup>1-2</sup>	SI <sup>1-2</sup>	I <sup>1-3</sup>
Flawless	Internally Flawless	Very Very Slightly Included	Very Slightly Included	Slightly Included	Included



**ADDITIONAL GRADING INFORMATION**

Polish **EXCELLENT**

Symmetry **EXCELLENT**

Fluorescence **NONE**

Inscription(s) **LG759508571**

Comments: This Laboratory Grown Diamond was created by Chemical Vapor Deposition (CVD) growth process.  
Type IIa



**IGI**



January 29, 2026  
IGI Report No LG759508571  
ROUND BRILLIANT  
8.21 - 8.25 X 4.88 MM  
Carat Weight 2.03 CARATS  
Color Grade G  
Clarity Grade VVS 2  
Cut Grade EXCELLENT  
Depth 61%  
Table 43%  
Girdle 13%  
Medium To Slightly Thick (Faceted)  
Culet Pointed  
Polish EXCELLENT  
Symmetry EXCELLENT  
Fluorescence NONE  
Inscription(s) LG759508571  
Comments: This Laboratory Grown Diamond was created by Chemical Vapor Deposition (CVD) growth process.  
Type IIa