



**ELECTRONIC COPY**

LG759505810  
Report verification at igi.org



February 6, 2026

IGI Report Number **LG759505810**

Description **LABORATORY GROWN DIAMOND**

Shape and Cutting Style **ROUND BRILLIANT**

Measurements **10.10 - 10.16 X 6.23 MM**

**GRADING RESULTS**

Carat Weight **4.01 CARATS**

Color Grade **E**

Clarity Grade **VVS 2**

Cut Grade **IDEAL**

February 6, 2026  
IGI Report Number **LG759505810**  
Description **LABORATORY GROWN DIAMOND**  
Shape and Cutting Style **ROUND BRILLIANT**  
Measurements **10.10 - 10.16 X 6.23 MM**

**GRADING RESULTS**

Carat Weight **4.01 CARATS**

Color Grade **E**

Clarity Grade **VVS 2**

Cut Grade **IDEAL**

**ADDITIONAL GRADING INFORMATION**

Polish **EXCELLENT**

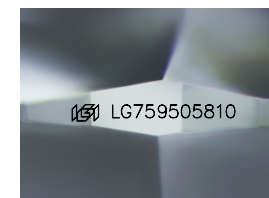
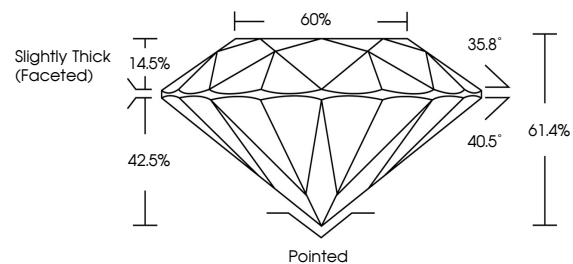
Symmetry **EXCELLENT**

Fluorescence **NONE**

Inscription(s) **IGI LG759505810**

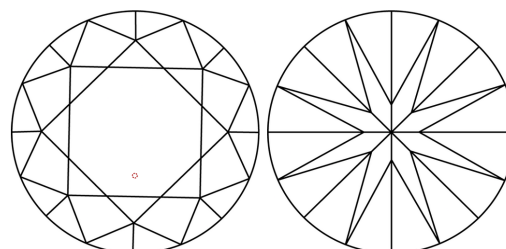
Comments: This Laboratory Grown Diamond was created by Chemical Vapor Deposition (CVD) growth process.  
Type IIa

**PROPORTIONS**



Sample Image Used

**CLARITY CHARACTERISTICS**



**KEY TO SYMBOLS**

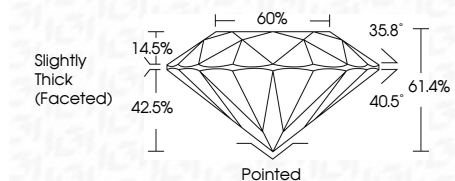
Red symbols indicate internal characteristics.  
Green symbols indicate external characteristics.

**COLOR**

D E F G H I J Faint Very Light Light

**CLARITY**

| FL       | IF                  | VVS <sup>1-2</sup>          | VS <sup>1-2</sup>      | SI <sup>1-2</sup> | I <sup>1-3</sup> |
|----------|---------------------|-----------------------------|------------------------|-------------------|------------------|
| Flawless | Internally Flawless | Very Very Slightly Included | Very Slightly Included | Slightly Included | Included         |



**ADDITIONAL GRADING INFORMATION**

Polish **EXCELLENT**

Symmetry **EXCELLENT**

Fluorescence **NONE**

Inscription(s) **IGI LG759505810**

Comments: This Laboratory Grown Diamond was created by Chemical Vapor Deposition (CVD) growth process.  
Type IIa



**IGI**



|                  |                           |                 |                         |             |       |        |        |          |              |                          |  |           |           |      |                 |
|------------------|---------------------------|-----------------|-------------------------|-------------|-------|--------|--------|----------|--------------|--------------------------|--|-----------|-----------|------|-----------------|
| February 6, 2026 | IGI Report No LG759505810 | ROUND BRILLIANT | 10.10 - 10.16 X 6.23 MM | 4.01 CARATS | E     | VVS 2  | IDEAL  | 61.4%    | 60%          | Slightly Thick (Faceted) | Pointed  | EXCELLENT | EXCELLENT | NONE | IGI LG759505810 |
| IGI              | Color Grade               | Clarity Grade   | Cut Grade               | Depth       | Table | Girdle | Polish | Symmetry | Fluorescence | Inscription(s)           | Comments: This Laboratory Grown Diamond was created by Chemical Vapor Deposition (CVD) growth process.<br>Type IIa |           |           |      |                 |