



ELECTRONIC COPY

LG759505097
Report verification at igi.org



January 23, 2026

IGI Report Number **LG759505097**

Description **LABORATORY GROWN DIAMOND**

Shape and Cutting Style **PRINCESS CUT**

Measurements **7.55 X 7.47 X 5.24 MM**

GRADING RESULTS

Carat Weight **2.57 CARATS**

Color Grade **G**

Clarity Grade **VVS 2**

January 23, 2026

IGI Report Number **LG759505097**

Description **LABORATORY GROWN DIAMOND**

Shape and Cutting Style **PRINCESS CUT**

Measurements **7.55 X 7.47 X 5.24 MM**

GRADING RESULTS

Carat Weight **2.57 CARATS**

Color Grade **G**

Clarity Grade **VVS 2**

ADDITIONAL GRADING INFORMATION

Polish **EXCELLENT**

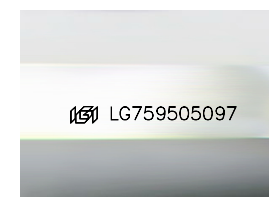
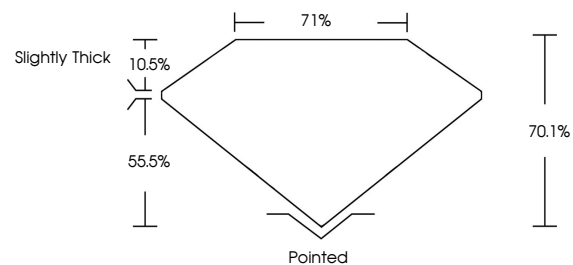
Symmetry **EXCELLENT**

Fluorescence **NONE**

Inscription(s) **LG759505097**

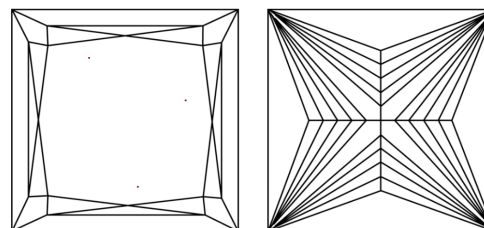
Comments: This Laboratory Grown Diamond was created by Chemical Vapor Deposition (CVD) growth process. Type IIa

PROPORTIONS



Sample Image Used

CLARITY CHARACTERISTICS



KEY TO SYMBOLS

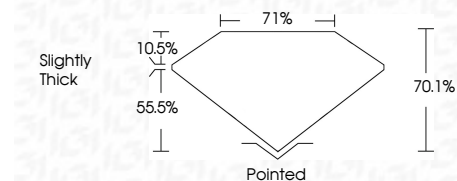
Red symbols indicate internal characteristics.
Green symbols indicate external characteristics.

COLOR

D E F G H I J Faint Very Light Light

CLARITY

FL	IF	VVS ¹⁻²	VS ¹⁻²	SI ¹⁻²	I ¹⁻³
Flawless	Internally Flawless	Very Very Slightly Included	Very Slightly Included	Slightly Included	Included



ADDITIONAL GRADING INFORMATION

Polish **EXCELLENT**

Symmetry **EXCELLENT**

Fluorescence **NONE**

Inscription(s) **LG759505097**

Comments: This Laboratory Grown Diamond was created by Chemical Vapor Deposition (CVD) growth process. Type IIa



January 23, 2026
IGI Report No. LG759505097
PRINCESS CUT

7.55 X 7.47 X 5.24 MM

2.57 CARATS
G

VVS 2
70.1%
71%
Slightly Thick

Pointed
EXCELLENT
EXCELLENT
NONE
NONE
IGI LG759505097

Comments: This Laboratory Grown Diamond was created by Chemical Vapor Deposition (CVD) growth process. Type IIa