



ELECTRONIC COPY

LG758596566 Report verification at igi.org



December 24, 2025 IGI Report Number LG758596566 Description LABORATORY GROWN DIAMOND Shape and Cutting Style ROUND BRILLIANT Measurements 8.01 - 8.09 X 4.92 MM GRADING RESULTS Carat Weight 2.01 CARATS Color Grade E Clarity Grade VS 1 Cut Grade EXCELLENT

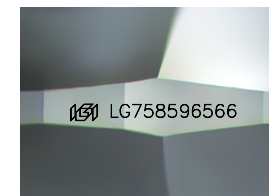
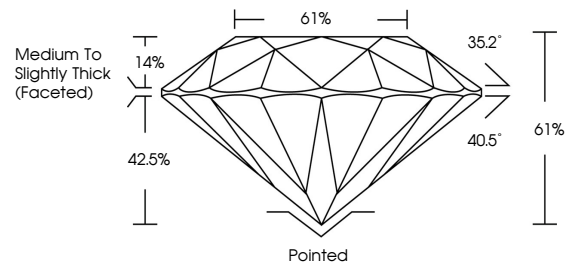
December 24, 2025 IGI Report Number LG758596566 Description LABORATORY GROWN DIAMOND Shape and Cutting Style ROUND BRILLIANT Measurements 8.01 - 8.09 X 4.92 MM GRADING RESULTS Carat Weight 2.01 CARATS Color Grade E Clarity Grade VS 1 Cut Grade EXCELLENT

ADDITIONAL GRADING INFORMATION

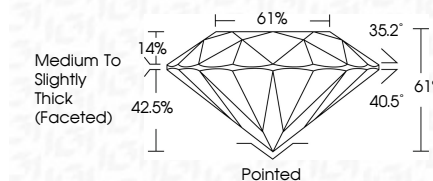
Polish EXCELLENT Symmetry EXCELLENT Fluorescence NONE Inscription(s) IGI LG758596566

Comments: This Laboratory Grown Diamond was created by Chemical Vapor Deposition (CVD) growth process. Type IIa

PROPORTIONS



Sample Image Used



COLOR

D E F G H I J Faint Very Light Light

CLARITY

FL IF VS 1-2 VS 1-2 SI 1-2 I 1-3 Flawless Internally Flawless Very Very Slightly Included Very Slightly Included Slightly Included Included

ADDITIONAL GRADING INFORMATION

Polish EXCELLENT Symmetry EXCELLENT Fluorescence NONE Inscription(s) IGI LG758596566 Comments: This Laboratory Grown Diamond was created by Chemical Vapor Deposition (CVD) growth process. Type IIa



IGI



December 24, 2025 IGI Report No LG758596566 ROUND BRILLIANT 8.01 - 8.09 X 4.92 MM 2.01 CARATS E Color Grade EXCELLENT VS 1 Clarity Grade EXCELLENT 61% Depth 61% Table Medium To Slightly Thick (Faceted) Pavilion EXCELLENT Girdle EXCELLENT None Color EXCELLENT Symmetry EXCELLENT Fluorescence NONE Inscription(s) IGI LG758596566 Comments: This Laboratory Grown Diamond was created by Chemical Vapor Deposition (CVD) growth process. Type IIa

Certified SUSTAINABILITY RATED DIAMOND SCS GLOBAL SERVICES All certified diamonds come with an individual certificate, ONLY available at an accredited retailer. Includes QR code and 'FOR THE SUSTAINABILITY RATED CERTIFICATE, SCAN HERE' text.