



**INTERNATIONAL  
GEMOLOGICAL  
INSTITUTE**

**ELECTRONIC COPY**



December 22, 2025

**IGI Report Number LG758590005**  
**SQUARE CUSHION MODIFIED**  
**BRILLIANT**

**LABORATORY GROWN DIAMOND**  
**5.82 X 5.61 X 3.78 MM**

Carat Weight **0.93 CARAT**  
Color Grade **F**  
Clarity Grade **VVS 1**  
Polish **EXCELLENT**  
Symmetry **EXCELLENT**  
Fluorescence **NONE**  
Inscription(s) **IGI LG758590005**

Comments: As Grown - No indication of post-growth treatment. This Laboratory Grown Diamond was created by High Pressure High Temperature (HPHT) growth process. Type II

**LABORATORY GROWN DIAMOND REPORT**

December 22, 2025

IGI Report Number **LG758590005**

Description **LABORATORY GROWN DIAMOND**

Shape and Cutting Style **SQUARE CUSHION MODIFIED BRILLIANT**

Measurements **5.82 X 5.61 X 3.78 MM**

**GRADING RESULTS**

Carat Weight **0.93 CARAT**

Color Grade **F**

Clarity Grade **VVS 1**

**ADDITIONAL GRADING INFORMATION**

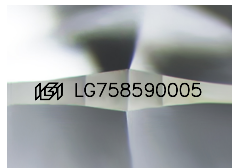
Polish **EXCELLENT**

Symmetry **EXCELLENT**

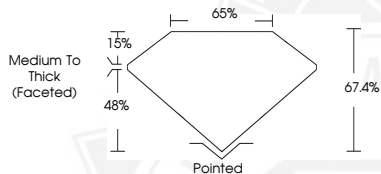
Fluorescence **NONE**

Inscription(s) **IGI LG758590005**

Comments: As Grown - No indication of post-growth treatment. This Laboratory Grown Diamond was created by High Pressure High Temperature (HPHT) growth process. Type II



Sample Image Used



December 22, 2025

**IGI Report Number LG758590005**  
**SQUARE CUSHION MODIFIED**  
**BRILLIANT**

**LABORATORY GROWN DIAMOND**  
**5.82 X 5.61 X 3.78 MM**

Carat Weight **0.93 CARAT**  
Color Grade **F**  
Clarity Grade **VVS 1**  
Polish **EXCELLENT**  
Symmetry **EXCELLENT**  
Fluorescence **NONE**  
Inscription(s) **IGI LG758590005**

Comments: As Grown - No indication of post-growth treatment. This Laboratory Grown Diamond was created by High Pressure High Temperature (HPHT) growth process. Type II



THIS DOCUMENT WAS PRODUCED WITH THE FOLLOWING SECURITY MEASURES: SPECIAL DOCUMENT PAPER, INK SCREENS, WATERMARK, BACKGROUND DESIGNS, HOLOGRAM AND OTHER SECURITY FEATURES NOT LISTED AND DO EXCEED DOCUMENT SECURITY INDUSTRY GUIDELINES.

For terms & conditions and to verify this report, please visit [www.igi.org](http://www.igi.org)