



**LABORATORY GROWN DIAMOND REPORT**

December 20, 2025  
 IGI Report Number **LG758585854**  
 Description **LABORATORY GROWN DIAMOND**  
 Shape and Cutting Style **HEXAGONAL MODIFIED STEP CUT**  
 Measurements **7.28 X 3.14 X 1.92 MM**

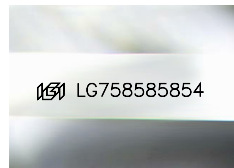
**GRADING RESULTS**

Carat Weight **0.35 CARAT**  
 Color Grade **F**  
 Clarity Grade **VS 2**

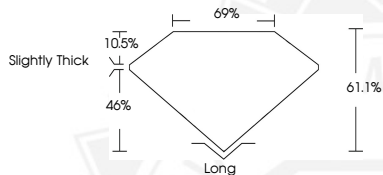
**ADDITIONAL GRADING INFORMATION**

Polish **EXCELLENT**  
 Symmetry **EXCELLENT**  
 Fluorescence **NONE**  
 Inscription(s) **IGI LG758585854**

Comments: This Laboratory Grown Diamond was created by  
 Chemical Vapor Deposition (CVD) growth process.  
 Type IIa



Sample Image Used



December 20, 2025  
 IGI Report Number **LG758585854**  
 HEXAGONAL MODIFIED STEP CUT  
 LABORATORY GROWN DIAMOND  
 7.28 X 3.14 X 1.92 MM  
 Carat Weight **0.35 CARAT**  
 Color Grade **F**  
 Clarity Grade **VS 2**  
 Polish **EXCELLENT**  
 Symmetry **EXCELLENT**  
 Fluorescence **NONE**  
 Inscription(s) **IGI LG758585854**

Comments: This Laboratory Grown  
 Diamond was created by  
 Chemical Vapor Deposition (CVD)  
 growth process. Type IIa



December 20, 2025  
 IGI Report Number **LG758585854**  
 HEXAGONAL MODIFIED STEP CUT  
 LABORATORY GROWN DIAMOND  
 7.28 X 3.14 X 1.92 MM  
 Carat Weight **0.35 CARAT**  
 Color Grade **F**  
 Clarity Grade **VS 2**  
 Polish **EXCELLENT**  
 Symmetry **EXCELLENT**  
 Fluorescence **NONE**  
 Inscription(s) **IGI LG758585854**

Comments: This Laboratory Grown  
 Diamond was created by  
 Chemical Vapor Deposition (CVD)  
 growth process. Type IIa



THIS DOCUMENT WAS PRODUCED WITH THE FOLLOWING SECURITY MEASURES: SPECIAL DOCUMENT PAPER, INK SCREENS, WATERMARK, BACKGROUND DESIGNS, HOLOGRAM AND OTHER SECURITY FEATURES NOT LISTED AND DO EXCEED DOCUMENT SECURITY INDUSTRY GUIDELINES.