



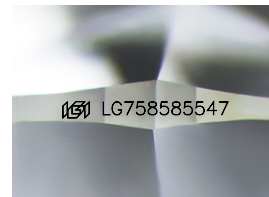
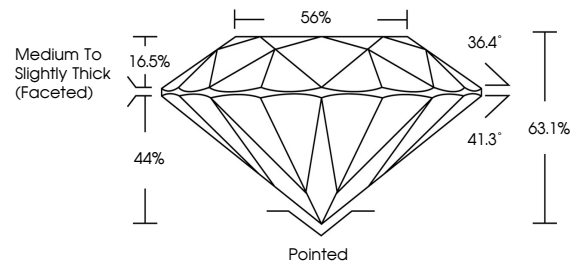
**INTERNATIONAL
GEMOLOGICAL
INSTITUTE**

ELECTRONIC COPY

LABORATORY GROWN DIAMOND REPORT

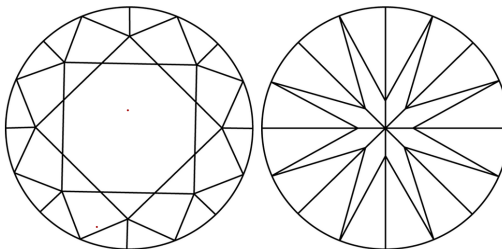
LG758585547
Report verification at [igi.org](https://www.igi.org)

PROPORTIONS



Sample Image Used

CLARITY CHARACTERISTICS



KEY TO SYMBOLS

Red symbols indicate internal characteristics.
Green symbols indicate external characteristics.

COLOR

D E F G H I J Faint Very Light Light

CLARITY

FL	IF	VVS ¹⁻²	VS ¹⁻²	SI ¹⁻²	I ¹⁻³
Flawless	Internally Flawless	Very Very Slightly Included	Very Slightly Included	Slightly Included	Included



December 24, 2025

IGI Report Number **LG758585547**

Description	LABORATORY GROWN DIAMOND
-------------	--------------------------

Shape and Cutting Style **ROUND BRILLIANT**

Measurements **8.31 - 8.35 X 5.26 MM**

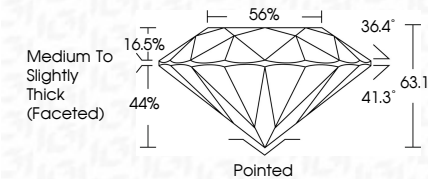
GRADING RESULTS

Carat Weight **2.23 CARATS**

Color Grade	E
-------------	---

Clarity Grade **VVS 2**

Cut Grade **EXCELLENT**



ADDITIONAL GRADING INFORMATION

Polish **EXCELLENT**Symmetry **EXCELLENT**Fluorescence **NONE**

Inscription(s)  LG758585547

Comments: This Laboratory Grown Diamond was created by Chemical Vapor Deposition (CVD) growth process.
Type IIa



IG



© IGI 2020, International Gemological Institute

FD - 10 20

www.igi.org

THIS DOCUMENT WAS PRODUCED WITH THE FOLLOWING SECURITY MEASURES: SPECIAL DOCUMENT PAPER, INK SCREENS, WATERMARK, BACKGROUND DESIGNS, HOLOGRAM AND OTHER SECURITY FEATURES NOT LISTED AND DO EXCEED DOCUMENT SECURITY INDUSTRY GUIDELINES

December 24, 2025
IGI Report No LG758585547
ROUND BRILLIANT

8.31 - 8.35 X 5.25 MM	Color Grade	VVS 2	2.23 CARATS
Carat Weight	Clarity Grade	EXCELLENT	E
Cut Grade	Cut Grade	63.1%	
Depth	Table	56%	
Girdle	Girdle	Medium to slightly Thick (faceted)	
Culet	Culet	Pointed	
Polish	Polish	EXCELLENT	
Symmetry	Symmetry	EXCELLENT	
Fluorescence	Fluorescence	NONE	
Measurements	Measurements	4mm x 1.75mm x 0.7mm	

Comments:
This Laboratory Grown Diamond was created by Chemical Vapor Deposition (CVD) growth process.