



**ELECTRONIC COPY**

## LABORATORY GROWN DIAMOND REPORT

December 22, 2025	
IGI Report Number	LG758585387
Description	LABORATORY GROWN DIAMOND
Shape and Cutting Style	ROUND BRILLIANT
Measurements	8.68 - 8.70 X 5.44 MM

## GRADING RESULTS

Carat Weight	2.50 CARATS
Color Grade	D
Clarity Grade	VVS 2
Cut Grade	EXCELLENT

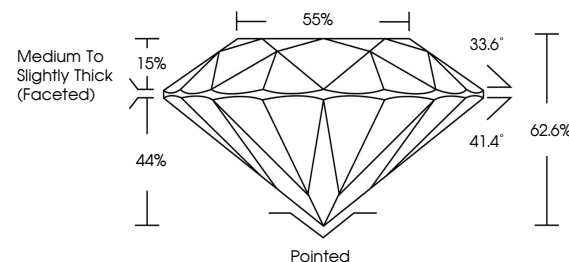
### ADDITIONAL GRADING INFORMATION

Polish	EXCELLENT
Symmetry	EXCELLENT
Fluorescence	NONE
Inscription(s)	 LG758585387

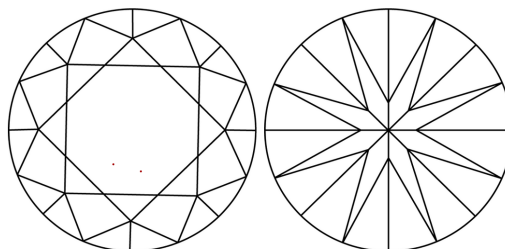
Comments: This Laboratory Grown Diamond was created by Chemical Vapor Deposition (CVD) growth process.  
Type IIa

LG758585387  
Report verification at [lgi.org](https://lgi.org)

## PROPORTIONS

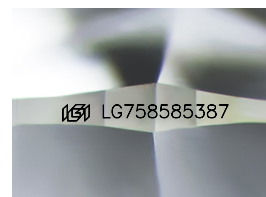


## CLARITY CHARACTERISTICS



### KEY TO SYMBOLS

Red symbols indicate internal characteristics.  
Green symbols indicate external characteristics.



Sample Image Used

## COLOR

D E F G H I J Faint Very Light Light

## CLARITY

FL	IF	VVS <sup>1-2</sup>	VS <sup>1-2</sup>	SI <sup>1-2</sup>	I <sup>1-3</sup>
Flawless	Internally Flawless	Very Very Slightly Included	Very Slightly Included	Slightly Included	Included

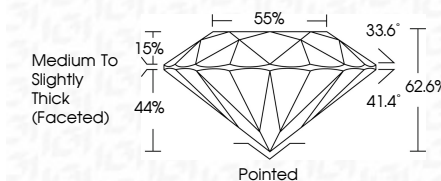
## LABORATORY GROWN DIAMOND REPORT



December 22, 2025	
IGI Report Number	LG758585387
Description	LABORATORY GROWN DIAMOND
Shape and Cutting Style	ROUND BRILLIANT
Measurements	8.68 - 8.70 X 5.44 MM

## GRADING RESULTS

Carat Weight	2.50 CARATS
Color Grade	D
Clarity Grade	VVS 2
Cut Grade	EXCELLENT



### ADDITIONAL GRADING INFORMATION

Polish	EXCELLENT
Symmetry	EXCELLENT
Fluorescence	NONE
Inscription(s)	 LG758585387
<p>Comments: This Laboratory Grown Diamond was created by Chemical Vapor Deposition (CVD) growth process.</p> <p>Type IIa</p>	



© IGI 2020, International Gemological Institute

FD - 10 20



THIS DOCUMENT WAS PRODUCED WITH THE FOLLOWING SECURITY MEASURES: SPECIAL DOCUMENT PAPER, INK SCREENS, WATERMARK, BACKGROUND DESIGNS, HOLOGRAM AND OTHER SECURITY FEATURES NOT LISTED AND DO EXCEED DOCUMENT SECURITY INDUSTRY GUIDELINE

**www.igi.org**

December 22, 2025  
 IGI Report No LG758585387  
 ROUND BRILLIANT

<b>ROUND BRILLIANT</b>	<b>6.08 - 8.70 x 5.44 MM</b>	<b>Carat Weight</b>	<b>2.90 CARATS</b>
		<b>Color Grade</b>	<b>D</b>
		<b>Clarity Grade</b>	<b>VVS 2</b>
		<b>Cut Grade</b>	<b>EXCELLENT</b>
		<b>Depth</b>	<b>62.6%</b>
		<b>Table</b>	<b>58%</b>
		<b>Girdle</b>	<b>Medium To Slightly Thick (Faceted)</b>
		<b>Culet</b>	<b>Pointed</b>
		<b>Polish</b>	<b>EXCELLENT</b>
		<b>Symmetry</b>	<b>EXCELLENT</b>
		<b>Fluorescence</b>	<b>NONE</b>

**Comments:**  
This Laboratory Grown Diamond was  
created by Chemical Vapor Deposition  
(CVD) growth process.