



# INTERNATIONAL GEMOLOGICAL INSTITUTE

ELECTRONIC COPY



December 29, 2025

IGI Report Number **LG758583412**

**HEART BRILLIANT**  
**LABORATORY GROWN DIAMOND**  
**5.65 X 6.87 X 3.32 MM**

Carat Weight **0.93 CARAT**  
Color Grade **FANCY YELLOW**  
Clarity Grade **VS 1**  
Polish **EXCELLENT**  
Symmetry **EXCELLENT**  
Fluorescence **NONE**  
Inscription(s) **IGI LG758583412**

Comments: This Laboratory Grown Diamond was created by Chemical Vapor Deposition (CVD) growth process.

## LABORATORY GROWN DIAMOND REPORT

December 29, 2025

IGI Report Number

**LG758583412**

Description

**LABORATORY GROWN DIAMOND**

Shape and Cutting Style

**HEART BRILLIANT**

Measurements

**5.65 X 6.87 X 3.32 MM**

### GRADING RESULTS

Carat Weight

**0.93 CARAT**

Color Grade

**FANCY YELLOW**

Clarity Grade

**VS 1**

### ADDITIONAL GRADING INFORMATION

Polish

**EXCELLENT**

Symmetry

**EXCELLENT**

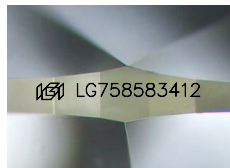
Fluorescence

**NONE**

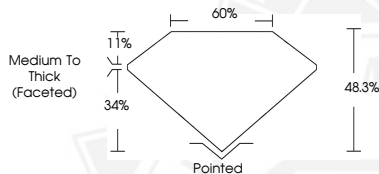
Inscription(s)

**IGI LG758583412**

Comments: This Laboratory Grown Diamond was created by Chemical Vapor Deposition (CVD) growth process.



Sample Image Used



December 29, 2025

IGI Report Number **LG758583412**

**HEART BRILLIANT**  
**LABORATORY GROWN DIAMOND**  
**5.65 X 6.87 X 3.32 MM**

Carat Weight **0.93 CARAT**  
Color Grade **FANCY YELLOW**  
Clarity Grade **VS 1**  
Polish **EXCELLENT**  
Symmetry **EXCELLENT**  
Fluorescence **NONE**  
Inscription(s) **IGI LG758583412**

Comments: This Laboratory Grown Diamond was created by Chemical Vapor Deposition (CVD) growth process.



THIS DOCUMENT WAS PRODUCED WITH THE FOLLOWING SECURITY MEASURES: SPECIAL DOCUMENT PAPER, INK SCREENS, WATERMARK, BACKGROUND DESIGNS, HOLOGRAM AND OTHER SECURITY FEATURES NOT LISTED AND DO EXCEED DOCUMENT SECURITY INDUSTRY GUIDELINES.

For terms & conditions and to verify this report, please visit [www.igi.org](http://www.igi.org)