

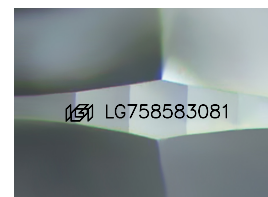
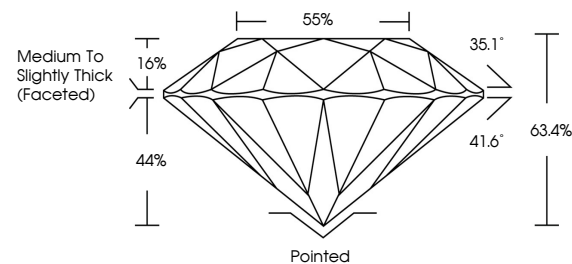


ELECTRONIC COPY

LABORATORY GROWN DIAMOND REPORT

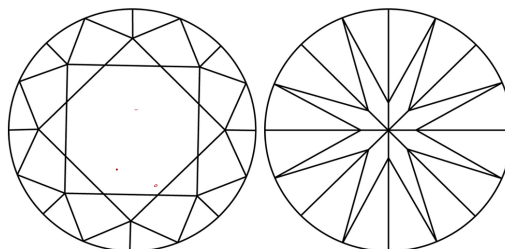
LG758583081
Report verification at igi.org

PROPORTIONS



Sample Image Used

CLARITY CHARACTERISTICS



KEY TO SYMBOLS

Red symbols indicate internal characteristics.
Green symbols indicate external characteristics.

COLOR

D E F G H I J Faint Very Light Light

CLARITY

FL	IF	VVS ¹⁻²	VS ¹⁻²	SI ¹⁻²	I ¹⁻³
Flawless	Internally Flawless	Very Very Slightly Included	Very Slightly Included	Slightly Included	Included

LABORATORY GROWN DIAMOND REPORT



December 22, 2025

IGI Report Number **LG758583081**Description **LABORATORY GROWN DIAMOND**Shape and Cutting Style **ROUND BRILLIANT**

Measurements 8.02 - 8.07 X 5.11 MM

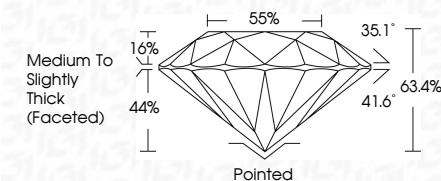
GRADING RESULTS

Carat Weight **2.02 CARATS**

Color Grade

Clarity Grade VS 1

Cut Grade **EXCELLENT**



ADDITIONAL GRADING INFORMATION

Polish **EXCELLENT**Symmetry **EXCELLENT**Fluorescence **NONE**Inscription(s) LG758583081

Comments: This Laboratory Grown Diamond was created by Chemical Vapor Deposition (CVD) growth process.
Type IIa



IG



© IGI 2020, International Gemological Institute

FD - 10 20



THIS DOCUMENT WAS PRODUCED WITH THE FOLLOWING SECURITY MEASURES: SPECIAL DOCUMENT PAPER, INK SCREENS, WATERMARK, BACKGROUND DESIGNS, HOLOGRAM AND OTHER SECURITY FEATURES NOT LISTED AND DO EXCEED DOCUMENT SECURITY INDUSTRY GUIDELINES

www.igi.org

December 22, 2025
IGI Report No LG758583081
ROUND BRILLIANT

8.02 - 8.07 X 5.11 MM		2.02 CARATS	
Carat Weight		Color Grade	D
Clarity Grade		VS 1	
Cut Grade		EXCELLENT	
Depth		63.4%	
Table		55%	
Girdle		Medium To Slightly Thick (faceted)	
Culet		Pointed	
Polish		EXCELLENT	
Symmetry		EXCELLENT	
Fluorescence		NONE	
Measurements		4mm (17.5mm)	

Comments:
This Laboratory Grown Diamond was created by Chemical Vapor Deposition (CVD) growth process.