

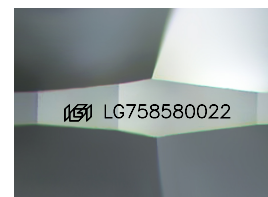
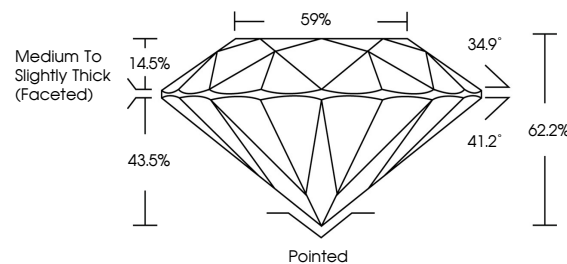


ELECTRONIC COPY

LABORATORY GROWN DIAMOND REPORT

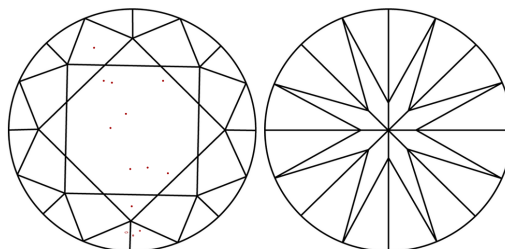
LG758580022
Report verification at igi.org

PROPORTIONS



Sample Image Used

CLARITY CHARACTERISTICS



KEY TO SYMBOLS

Red symbols indicate internal characteristics.
Green symbols indicate external characteristics.

COLOR

D E F G H I J Faint Very Light Light

CLARITY

FL	IF	VVS ¹⁻²	VS ¹⁻²	SI ¹⁻²	I ¹⁻³
Flawless	Internally Flawless	Very Very Slightly Included	Very Slightly Included	Slightly Included	Included

LABORATORY GROWN DIAMOND REPORT



December 23, 2025

IGI Report Number **LG758580022**Description **LABORATORY GROWN DIAMOND**Shape and Cutting Style **ROUND BRILLIANT**

Measurements 12.01 - 12.05 X 7.48 MM

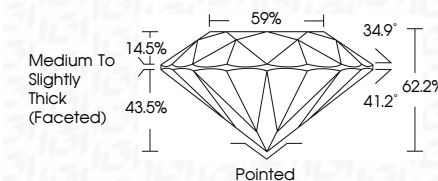
GRADING RESULTS

Carat Weight 6.72 CARATS

Color Grade **E**

Clarity Grade VS 1

Cut Grade **IDEAL**



ADDITIONAL GRADING INFORMATION

Polish EXCELLENT

Symmetry **EXCELLENT**Fluorescence **NONE**Inscription(s) LG758580022

Comments: This Laboratory Grown Diamond was created by Chemical Vapor Deposition (CVD) growth process.
Type IIa



© IGI 2020, International Gemological Institute

FD - 10 20



THIS DOCUMENT WAS PRODUCED WITH THE FOLLOWING SECURITY MEASURES: SPECIAL DOCUMENT PAPER, INK SCREENS, WATERMARK, BACKGROUND DESIGNS, HOLOGRAM AND OTHER SECURITY FEATURES NOT LISTED AND DO EXCEED DOCUMENT SECURITY INDUSTRY GUIDELINES

www.igi.org

December 23, 2025
 IGI Report No LG758580022
 ROUND BRILLIANT

ROND BRILLIANT	12.01 - 12.05 X 7.48 MM		6.72 CARATS		
	Carat Weight	E		VS 1 IDEAL 62.2% 59%	
	Color Grade	Clarity Grade			
	Depth	Cut Grade			
	Table	Girdle		Medium to Slightly Thick (Faceted)	
	Culet		Pointed		
	Polish		EXCELLENT		
Symmetry		EXCELLENT		NONE	
Fluorescence		EXCELLENT			
Lasermark		NONE			

Comments:
This Laboratory Grown Diamond was created by Chemical Vapor Deposition (CVD) growth process.