



**ELECTRONIC COPY**

LG758579907  
Report verification at igi.org



December 24, 2025  
IGI Report Number **LG758579907**  
Description **LABORATORY GROWN DIAMOND**  
Shape and Cutting Style **CUT CORNERED  
RECTANGULAR MODIFIED  
BRILLIANT**  
Measurements **7.61 X 5.25 X 3.42 MM**  
**GRADING RESULTS**  
Carat Weight **1.17 CARAT**  
Color Grade **D**  
Clarity Grade **VVS 2**

December 24, 2025  
IGI Report Number **LG758579907**  
Description **LABORATORY GROWN DIAMOND**  
Shape and Cutting Style **CUT CORNERED RECTANGULAR  
MODIFIED BRILLIANT**  
Measurements **7.61 X 5.25 X 3.42 MM**

**GRADING RESULTS**

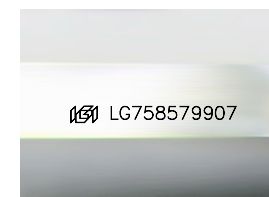
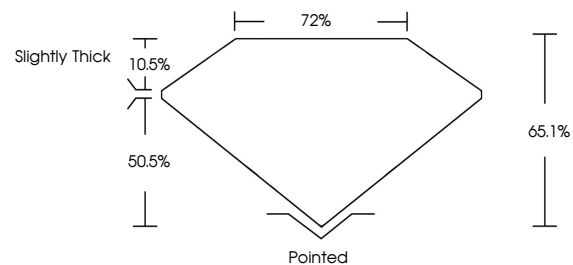
Carat Weight **1.17 CARAT**  
Color Grade **D**  
Clarity Grade **VVS 2**

**ADDITIONAL GRADING INFORMATION**

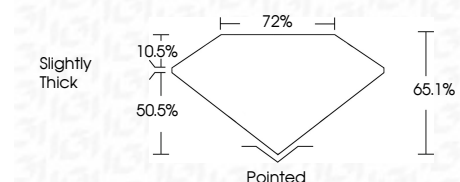
Polish **EXCELLENT**  
Symmetry **EXCELLENT**  
Fluorescence **NONE**  
Inscription(s) **IGI LG758579907**

Comments: This Laboratory Grown Diamond was created by Chemical Vapor Deposition (CVD) growth process.  
Type IIa

**PROPORTIONS**



Sample Image Used



**COLOR**

D E F G H I J Faint Very Light Light

**CLARITY**

FL	IF	VVS <sup>1-2</sup>	VS <sup>1-2</sup>	SI <sup>1-2</sup>	I <sup>1-3</sup>
Flawless	Internally Flawless	Very Very Slightly Included	Very Slightly Included	Slightly Included	Included

**ADDITIONAL GRADING INFORMATION**

Polish **EXCELLENT**  
Symmetry **EXCELLENT**  
Fluorescence **NONE**  
Inscription(s) **IGI LG758579907**  
Comments: This Laboratory Grown Diamond was created by Chemical Vapor Deposition (CVD) growth process.  
Type IIa



**IGI**



December 24, 2025  
IGI Report No **LG758579907**  
**CUT CORNERED RECT. MODIFIED BRILLIANT**  
**7.61 X 5.25 X 3.42 MM**  
Carat Weight **1.17 CARAT**  
Color Grade **D**  
Clarity Grade **VVS 2**  
Depth **65.1%**  
Table **72%**  
Girdle **Slightly Thick**  
Culet **Pointed**  
Polish **EXCELLENT**  
Symmetry **EXCELLENT**  
Fluorescence **NONE**  
Inscription(s) **IGI LG758579907**

Comments: This Laboratory Grown Diamond was created by Chemical Vapor Deposition (CVD) growth process.  
Type IIa