



ELECTRONIC COPY

LG758578650
Report verification at igi.org



January 12, 2026

IGI Report Number **LG758578650**

Description **LABORATORY GROWN DIAMOND**

Shape and Cutting Style **CUT CORNERED
RECTANGULAR MODIFIED
BRILLIANT**

Measurements **8.78 X 6.25 X 4.45 MM**

GRADING RESULTS

Carat Weight **2.07 CARATS**

Color Grade **E**

Clarity Grade **VVS 2**

January 12, 2026

IGI Report Number **LG758578650**

Description **LABORATORY GROWN DIAMOND**

Shape and Cutting Style **CUT CORNERED RECTANGULAR
MODIFIED BRILLIANT**

Measurements **8.78 X 6.25 X 4.45 MM**

GRADING RESULTS

Carat Weight **2.07 CARATS**

Color Grade **E**

Clarity Grade **VVS 2**

ADDITIONAL GRADING INFORMATION

Polish **EXCELLENT**

Symmetry **EXCELLENT**

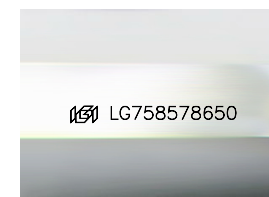
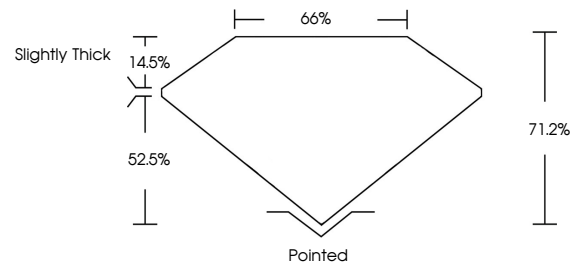
Fluorescence **NONE**

Inscription(s) **IGI LG758578650**

Comments: As Grown - No indication of post-growth treatment.

This Laboratory Grown Diamond was created by High Pressure High Temperature (HPHT) growth process. Type II

PROPORTIONS



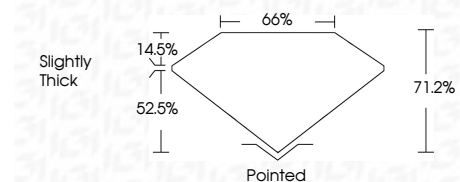
Sample Image Used

COLOR

D E F G H I J Faint Very Light Light

CLARITY

FL	IF	VVS ¹⁻²	VS ¹⁻²	SI ¹⁻²	I ¹⁻³
Flawless	Internally Flawless	Very Very Slightly Included	Very Slightly Included	Slightly Included	Included



ADDITIONAL GRADING INFORMATION

Polish **EXCELLENT**

Symmetry **EXCELLENT**

Fluorescence **NONE**

Inscription(s) **IGI LG758578650**

Comments: As Grown - No indication of post-growth treatment.

This Laboratory Grown Diamond was created by High Pressure High Temperature (HPHT) growth process. Type II



IGI



January 12, 2026
IGI Report No LG758578650
CUT CORNERED RECT. MODIFIED BRILLIANT
8.78 X 6.25 X 4.45 MM
2.07 CARATS
E
VVS 2
71.2%
66%
Slightly Thick
Pointed
EXCELLENT
EXCELLENT
NONE
IGI LG758578650

Comments: As Grown - No indication of post-growth treatment.
This Laboratory Grown Diamond was created by High Pressure High Temperature (HPHT) growth process. Type II