



**ELECTRONIC COPY**

**LABORATORY GROWN DIAMOND REPORT**

January 8, 2026  
IGI Report Number **LG758578608**

Description **LABORATORY GROWN DIAMOND**

Shape and Cutting Style **CUT CORNERED RECTANGULAR  
MODIFIED BRILLIANT**

Measurements **7.06 X 4.89 X 3.39 MM**

**GRADING RESULTS**

Carat Weight **1.01 CARAT**

Color Grade **D**

Clarity Grade **VVS 1**

**ADDITIONAL GRADING INFORMATION**

Polish **EXCELLENT**

Symmetry **EXCELLENT**

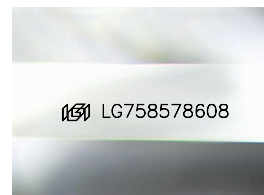
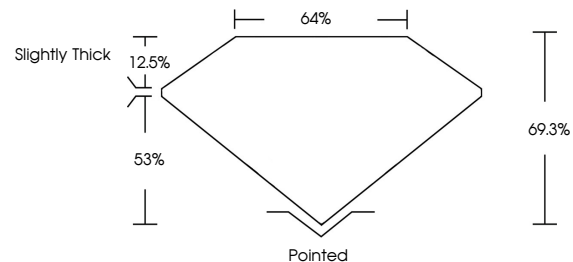
Fluorescence **NONE**

Inscription(s) **IGI LG758578608**

Comments: As Grown - No indication of post-growth treatment.

This Laboratory Grown Diamond was created by High Pressure High Temperature (HPHT) growth process. Type II

**PROPORTIONS**



Sample Image Used

**COLOR**

D E F G H I J Faint Very Light Light

**CLARITY**

FL	IF	VVS <sup>1-2</sup>	VS <sup>1-2</sup>	SI <sup>1-2</sup>	I <sup>1-3</sup>
Flawless	Internally Flawless	Very Very Slightly Included	Very Slightly Included	Slightly Included	Included



January 8, 2026

IGI Report Number **LG758578608**

Description **LABORATORY GROWN DIAMOND**

Shape and Cutting Style **CUT CORNERED  
RECTANGULAR MODIFIED  
BRILLIANT**

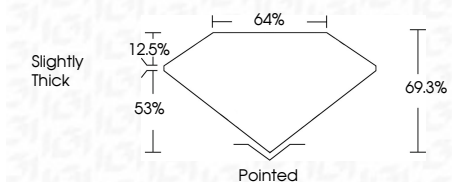
Measurements **7.06 X 4.89 X 3.39 MM**

**GRADING RESULTS**

Carat Weight **1.01 CARAT**

Color Grade **D**

Clarity Grade **VVS 1**



**ADDITIONAL GRADING INFORMATION**

Polish **EXCELLENT**

Symmetry **EXCELLENT**

Fluorescence **NONE**

Inscription(s) **IGI LG758578608**

Comments: As Grown - No indication of post-growth treatment.

This Laboratory Grown Diamond was created by High Pressure High Temperature (HPHT) growth process. Type II



**IGI**



January 8, 2026  
IGI Report No LG758578608  
CUT CORNERED RECT. MODIFIED BRILLIANT  
1.01 CARAT  
D  
Color Grade  
Clarity Grade  
7.06 X 4.89 X 3.39 MM  
7.06 X 4.89 X 3.39 MM  
D  
VVS 1  
69.3%  
53%  
12.5%  
Slightly Thick  
Pointed  
EXCELLENT  
EXCELLENT  
NONE  
IGI LG758578608  
Inscription(s)  
Comments: As Grown - No indication of post-growth treatment.  
This Laboratory Grown Diamond was created by High Pressure High Temperature (HPHT) growth process. Type II