



ELECTRONIC COPY

LG758578221
Report verification at igi.org



January 13, 2026

IGI Report Number **LG758578221**

Description **LABORATORY GROWN DIAMOND**

Shape and Cutting Style **EMERALD CUT**

Measurements **14.40 X 10.12 X 6.45 MM**

GRADING RESULTS

Carat Weight **10.01 CARATS**

Color Grade **F**

Clarity Grade **VVS 2**

January 13, 2026
IGI Report Number **LG758578221**
Description **LABORATORY GROWN DIAMOND**
Shape and Cutting Style **EMERALD CUT**
Measurements **14.40 X 10.12 X 6.45 MM**

GRADING RESULTS

Carat Weight **10.01 CARATS**

Color Grade **F**

Clarity Grade **VVS 2**

ADDITIONAL GRADING INFORMATION

Polish **EXCELLENT**

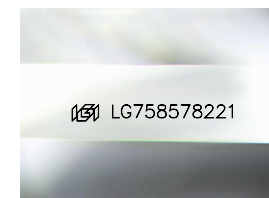
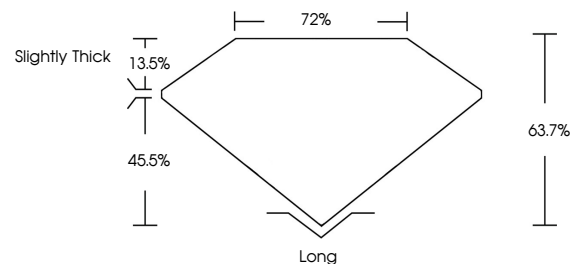
Symmetry **EXCELLENT**

Fluorescence **NONE**

Inscription(s) **IGI LG758578221**

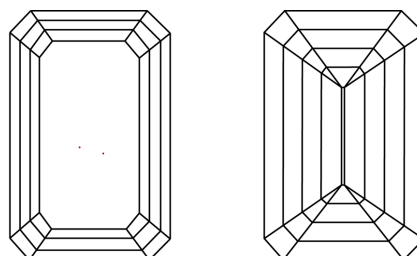
Comments: This Laboratory Grown Diamond was created by Chemical Vapor Deposition (CVD) growth process. Type IIa

PROPORTIONS



Sample Image Used

CLARITY CHARACTERISTICS



KEY TO SYMBOLS

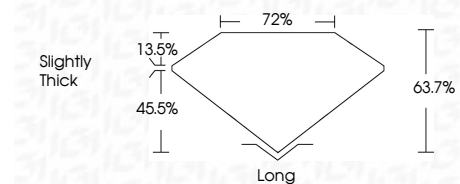
Red symbols indicate internal characteristics.
Green symbols indicate external characteristics.

COLOR

D E F G H I J Faint Very Light Light

CLARITY

FL	IF	VVS ¹⁻²	VS ¹⁻²	SI ¹⁻²	I ¹⁻³
Flawless	Internally Flawless	Very Very Slightly Included	Very Slightly Included	Slightly Included	Included



ADDITIONAL GRADING INFORMATION

Polish **EXCELLENT**

Symmetry **EXCELLENT**

Fluorescence **NONE**

Inscription(s) **IGI LG758578221**

Comments: This Laboratory Grown Diamond was created by Chemical Vapor Deposition (CVD) growth process. Type IIa



IGI



January 13, 2026
IGI Report No LG758578221
EMERALD CUT
14.40 X 10.12 X 6.45 MM
10.01 CARATS
F
Color Grade
VVS 2
Depth 63.7%
Table 72%
Girdle Slightly Thick
Culet Long
Polish EXCELLENT
Symmetry EXCELLENT
Fluorescence NONE
Inscription(s) IGI LG758578221
Comments: This Laboratory Grown Diamond was created by Chemical Vapor Deposition (CVD) growth process. Type IIa