



**ELECTRONIC COPY**

LG758577564  
Report verification at igi.org



January 2, 2026  
IGI Report Number **LG758577564**  
Description **LABORATORY GROWN DIAMOND**  
Shape and Cutting Style **ROUND BRILLIANT**  
Measurements **9.32 - 9.39 X 5.55 MM**  
**GRADING RESULTS**  
Carat Weight **3.02 CARATS**  
Color Grade **F**  
Clarity Grade **VVS 1**  
Cut Grade **EXCELLENT**

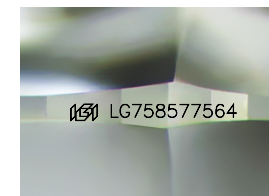
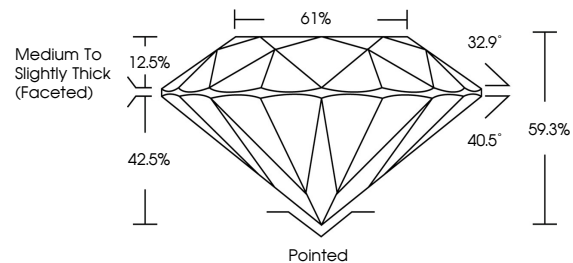
January 2, 2026  
IGI Report Number **LG758577564**  
Description **LABORATORY GROWN DIAMOND**  
Shape and Cutting Style **ROUND BRILLIANT**  
Measurements **9.32 - 9.39 X 5.55 MM**  
**GRADING RESULTS**  
Carat Weight **3.02 CARATS**  
Color Grade **F**  
Clarity Grade **VVS 1**  
Cut Grade **EXCELLENT**

**ADDITIONAL GRADING INFORMATION**

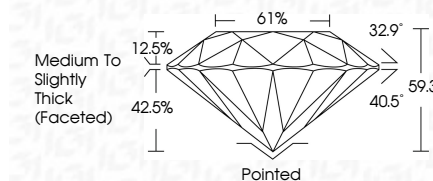
Polish **EXCELLENT**  
Symmetry **EXCELLENT**  
Fluorescence **NONE**  
Inscription(s) **LG758577564**

Comments: This Laboratory Grown Diamond was created by Chemical Vapor Deposition (CVD) growth process. Type IIa

**PROPORTIONS**



Sample Image Used



**COLOR**

D E F G H I J Faint Very Light Light

**CLARITY**

FL	IF	VVS <sup>1-2</sup>	VS <sup>1-2</sup>	SI <sup>1-2</sup>	I <sup>1-3</sup>
Flawless	Internally Flawless	Very Very Slightly Included	Very Slightly Included	Slightly Included	Included

**ADDITIONAL GRADING INFORMATION**

Polish **EXCELLENT**  
Symmetry **EXCELLENT**  
Fluorescence **NONE**  
Inscription(s) **LG758577564**  
Comments: This Laboratory Grown Diamond was created by Chemical Vapor Deposition (CVD) growth process. Type IIa



**IGI**



January 2, 2026  
IGI Report No LG758577564  
**ROUND BRILLIANT**  
9.32 - 9.39 X 5.55 MM  
3.02 CARATS  
F  
VVS 1  
EXCELLENT  
59.3%  
61%  
Medium To Slightly Thick (Faceted)  
Pointed  
EXCELLENT  
EXCELLENT  
NONE  
NONE  
IGI LG758577564  
Comments: This Laboratory Grown Diamond was created by Chemical Vapor Deposition (CVD) growth process. Type IIa