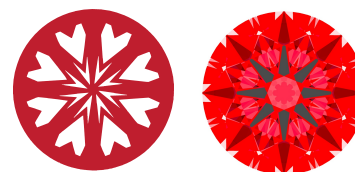




Light Performance Grade: Exceptional



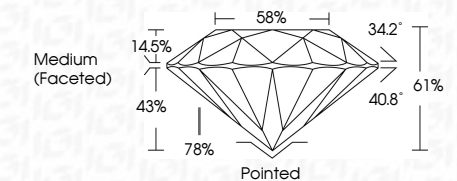
Structured Light Environment Representation



CLARITY table with categories: FL, IF, VS 1-2, VS 1-2, SI 1-2, I 1-3 and corresponding descriptions.



December 20, 2025
IGI Report Number: LG758577050
Description: LABORATORY GROWN DIAMOND
Shape and Cutting Style: ROUND BRILLIANT
Measurements: 9.31 - 9.36 X 5.69 MM
GRADING RESULTS
Carat Weight: 3.04 CARATS
Color Grade: D
Clarity Grade: VVS 2
Cut Grade: IDEAL



ADDITIONAL GRADING INFORMATION
Polish: EXCELLENT
Symmetry: EXCELLENT
Fluorescence: NONE
Inscription(s): IGI LG758577050
Comments: HEARTS & ARROWS
This Laboratory Grown Diamond was created by Chemical Vapor Deposition (CVD) growth process. Type IIa

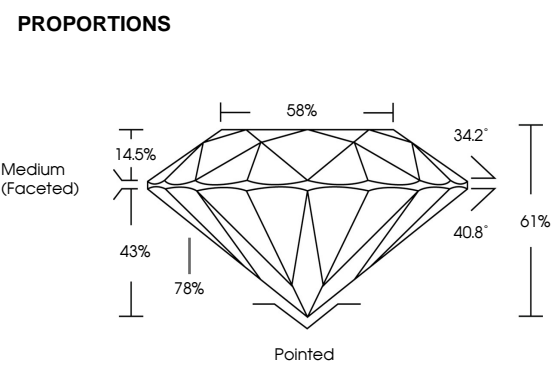
ELECTRONIC COPY
LABORATORY GROWN DIAMOND REPORT

December 20, 2025
IGI Report Number: LG758577050
Description: LABORATORY GROWN DIAMOND
Shape and Cutting Style: ROUND BRILLIANT
Measurements: 9.31 - 9.36 x 5.69 mm

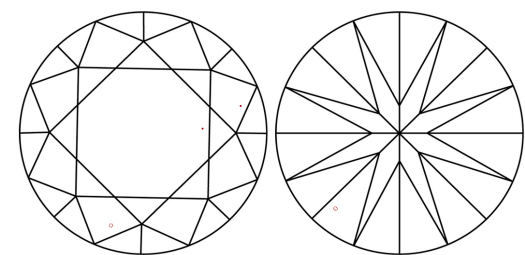
GRADING RESULTS
Carat Weight: 3.04 CARATS
Color Grade: D
Clarity Grade: VVS 2
Cut Grade: IDEAL

ADDITIONAL GRADING INFORMATION
Polish: EXCELLENT
Symmetry: EXCELLENT
Fluorescence: NONE
Inscription(s): IGI LG758577050

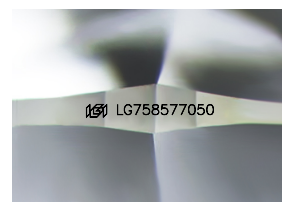
Comments: HEARTS & ARROWS
This Laboratory Grown Diamond was created by Chemical Vapor Deposition (CVD) growth process. Type IIa



CLARITY CHARACTERISTICS



KEY TO SYMBOLS
Red symbols indicate internal characteristics.
Green symbols indicate external characteristics.



Sample Image Used



Summary table of report details including date, report number, description, measurements, grading results, and additional information.