

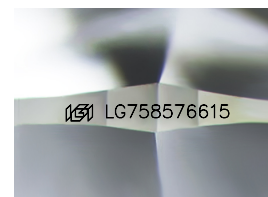
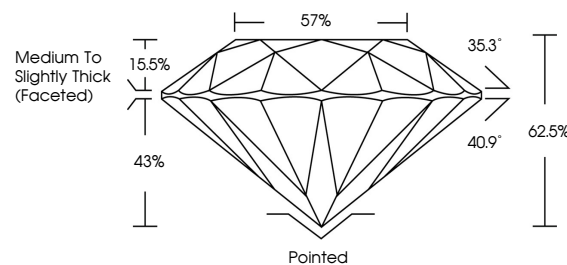


ELECTRONIC COPY

LABORATORY GROWN DIAMOND REPORT

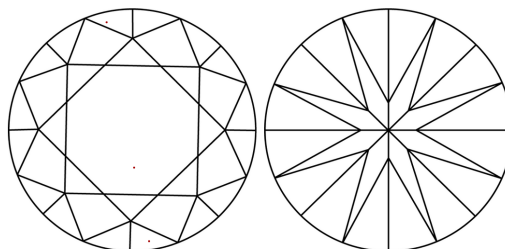
LG758576615
Report verification at igi.org

PROPORTIONS



Sample Image Used

CLARITY CHARACTERISTICS



KEY TO SYMBOLS

Red symbols indicate internal characteristics.
Green symbols indicate external characteristics.

COLOR

D E F G H I J Faint Very Light Light

CLARITY

FL	IF	VVS ¹⁻²	VS ¹⁻²	SI ¹⁻²	I ¹⁻³
Flawless	Internally Flawless	Very Very Slightly Included	Very Slightly Included	Slightly Included	Included

LABORATORY GROWN DIAMOND REPORT



December 22, 2025

IGI Report Number **LG758576615**Description **LABORATORY GROWN DIAMOND**Shape and Cutting Style **ROUND BRILLIANT**

Measurements 8.71 - 8.75 X 5.46 MM

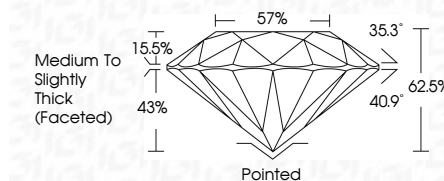
GRADING RESULTS

Carat Weight **2.57 CARATS**

Color Grade	F
-------------	---

Clarity Grade VVS 2

Cut Grade **IDEAL**



ADDITIONAL GRADING INFORMATION

Polish **EXCELLENT**Symmetry **EXCELLENT**Fluorescence **NONE**Inscription(s) LG758576615

Comments: This Laboratory Grown Diamond was created by Chemical Vapor Deposition (CVD) growth process.
Type IIa



© IGI 2020, International Gemological Institute

FD - 10 20



THIS DOCUMENT WAS PRODUCED WITH THE FOLLOWING SECURITY MEASURES: SPECIAL DOCUMENT PAPER, INK SCREENS, WATERMARK, BACKGROUND DESIGNS, HOLOGRAM, AND OTHER SECURITY FEATURES NOT LISTED AND DO EXCEED DOCUMENT SECURITY INDUSTRY GUIDELINES.

www.igi.org

December 22, 2025
IGI Report No LG758576615
ROUND BRILLIANT

Carat Weight		2.57 CARATS
Color Grade		F
Clarity Grade		VVS 2
Cut Grade		IDEAL
Depth		62.6%
Table		57%
Girdle		Medium to Slightly Thick (Faceted)
Culet		Pointed
Polish		Excellent
Symmetry		Excellent
Fluorescence		None
Comments		See Certificate for Details

Comments:
This Laboratory Grown Diamond was created by Chemical Vapor Deposition (CVD) growth process.