



ELECTRONIC COPY

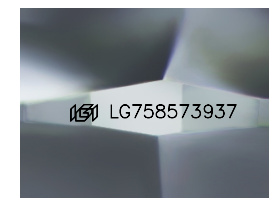
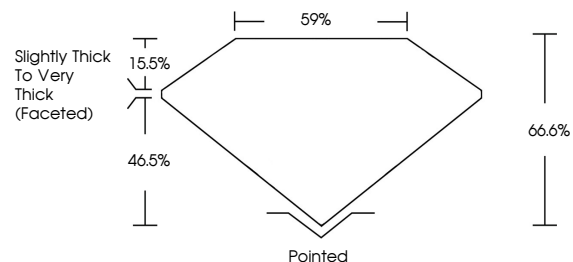
LG758573937
Report verification at igi.org



January 7, 2026
IGI Report Number **LG758573937**
Description **LABORATORY GROWN DIAMOND**
Shape and Cutting Style **CUSHION MODIFIED BRILLIANT**
Measurements **6.04 X 5.63 X 3.75 MM**
GRADING RESULTS
Carat Weight **1.13 CARAT**
Color Grade **FANCY BLUE**
Clarity Grade **VS 1**

January 7, 2026
IGI Report Number **LG758573937**
Description **LABORATORY GROWN DIAMOND**
Shape and Cutting Style **CUSHION MODIFIED BRILLIANT**
Measurements **6.04 X 5.63 X 3.75 MM**

PROPORTIONS

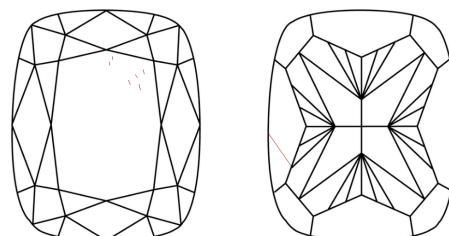


Sample Image Used

GRADING RESULTS

Carat Weight **1.13 CARAT**
Color Grade **FANCY BLUE**
Clarity Grade **VS 1**

CLARITY CHARACTERISTICS



KEY TO SYMBOLS

Red symbols indicate internal characteristics.
Green symbols indicate external characteristics.

ADDITIONAL GRADING INFORMATION

Polish **VERY GOOD**
Symmetry **VERY GOOD**
Fluorescence **NONE**
Inscription(s) **IGI LG758573937**

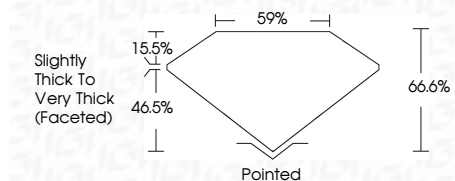
Comments: This Laboratory Grown Diamond was created by High Pressure High Temperature (HPHT) growth process.
Indications of post-growth treatment.

COLOR

D E F G H I J Faint Very Light Light

CLARITY

FL	IF	VS ¹⁻²	VS ¹⁻²	SI ¹⁻²	I ¹⁻³
Flawless	Internally Flawless	Very Very Slightly Included	Very Slightly Included	Slightly Included	Included



ADDITIONAL GRADING INFORMATION

Polish **VERY GOOD**
Symmetry **VERY GOOD**
Fluorescence **NONE**
Inscription(s) **IGI LG758573937**
Comments: This Laboratory Grown Diamond was created by High Pressure High Temperature (HPHT) growth process.
Indications of post-growth treatment.



January 7, 2026
IGI Report No LG758573937
CUSHION MODIFIED BRILLIANT
6.04 X 5.63 X 3.75 MM
1.13 CARAT
FANCY BLUE
Color Grade
Clarity Grade VS 1
Depth 66.6%
Table 59%
Girdle Slightly Thick To Very Thick (Faceted)
Culet Pointed
Polish VERY GOOD
Symmetry VERY GOOD
Fluorescence NONE
Inscription(s) IGI LG758573937
Comments: This Laboratory Grown Diamond was created by High Pressure High Temperature (HPHT) growth process.
Indications of post-growth treatment.