



# INTERNATIONAL GEMOLOGICAL INSTITUTE

ELECTRONIC COPY

## LABORATORY GROWN DIAMOND REPORT

December 24, 2025  
IGI Report Number **LG758572840**  
Description **LABORATORY GROWN DIAMOND**  
Shape and Cutting Style **PRINCESS CUT**  
Measurements **4.12 X 3.92 X 2.98 MM**

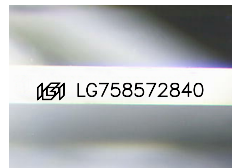
### GRADING RESULTS

Carat Weight **0.43 CARAT**  
Color Grade **FANCY VIVID PINK**  
Clarity Grade **VS 1**

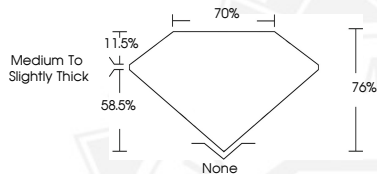
### ADDITIONAL GRADING INFORMATION

Polish **VERY GOOD**  
Symmetry **VERY GOOD**  
Fluorescence **SLIGHT**  
Inscription(s) **IGI LG758572840**

Comments: This Laboratory Grown Diamond was created by  
Chemical Vapor Deposition (CVD) growth process.  
Indications of post-growth treatment.



Sample Image Used



December 24, 2025  
IGI Report Number **LG758572840**  
**PRINCESS CUT**  
**LABORATORY GROWN DIAMOND**  
**4.12 X 3.92 X 2.98 MM**  
Carat Weight **0.43 CARAT**  
Color Grade **FANCY VIVID PINK**  
Clarity Grade **VS 1**  
Polish **VERY GOOD**  
Symmetry **VERY GOOD**  
Fluorescence **SLIGHT**  
Inscription(s) **IGI LG758572840**

Comments: This Laboratory Grown  
Diamond was created by  
Chemical Vapor Deposition (CVD)  
growth process. Indications of  
post-growth treatment.



December 24, 2025  
IGI Report Number **LG758572840**  
**PRINCESS CUT**  
**LABORATORY GROWN DIAMOND**  
**4.12 X 3.92 X 2.98 MM**  
Carat Weight **0.43 CARAT**  
Color Grade **FANCY VIVID PINK**  
Clarity Grade **VS 1**  
Polish **VERY GOOD**  
Symmetry **VERY GOOD**  
Fluorescence **SLIGHT**  
Inscription(s) **IGI LG758572840**

Comments: This Laboratory Grown  
Diamond was created by  
Chemical Vapor Deposition (CVD)  
growth process. Indications of  
post-growth treatment.



THIS DOCUMENT WAS PRODUCED WITH THE FOLLOWING SECURITY MEASURES: SPECIAL DOCUMENT PAPER, INK SCREENS, WATERMARK, BACKGROUND DESIGNS, HOLOGRAM AND OTHER SECURITY FEATURES NOT LISTED AND DO EXCEED DOCUMENT SECURITY INDUSTRY GUIDELINES.

For terms & conditions and to verify this report, please visit [www.igi.org](http://www.igi.org)