



INTERNATIONAL GEMOLOGICAL INSTITUTE

ELECTRONIC COPY

LABORATORY GROWN DIAMOND REPORT

December 27, 2025

IGI Report Number

LG758572783

Description

LABORATORY GROWN DIAMOND

Shape and Cutting Style

PRINCESS CUT

Measurements

3.96 X 3.84 X 2.56 MM

GRADING RESULTS

Carat Weight

0.36 CARAT

Color Grade

FANCY VIVID PINK

Clarity Grade

VVS 2

ADDITIONAL GRADING INFORMATION

Polish

VERY GOOD

Symmetry

GOOD

Fluorescence

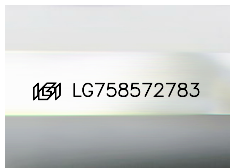
STRONG

Inscription(s)

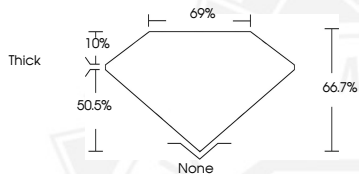
IGI LG758572783

Comments: This Laboratory Grown Diamond was created by Chemical Vapor Deposition (CVD) growth process. Indications of post-growth treatment.

Secondary color: Brown



Sample Image Used



December 27, 2025

IGI Report Number LG758572783

PRINCESS CUT

LABORATORY GROWN DIAMOND

3.96 X 3.84 X 2.56 MM

Carat Weight 0.36 CARAT

Color Grade FANCY VIVID PINK

Clarity Grade VVS 2

Polish VERY GOOD

Symmetry GOOD

Fluorescence STRONG

Inscription(s) IGI LG758572783

Comments: This Laboratory Grown Diamond was created by Chemical Vapor Deposition (CVD) growth process. Indications of post-growth treatment. Secondary color: Brown



December 27, 2025

IGI Report Number LG758572783

PRINCESS CUT

LABORATORY GROWN DIAMOND

3.96 X 3.84 X 2.56 MM

Carat Weight 0.36 CARAT

Color Grade FANCY VIVID PINK

Clarity Grade VVS 2

Polish VERY GOOD

Symmetry GOOD

Fluorescence STRONG

Inscription(s) IGI LG758572783

Comments: This Laboratory Grown Diamond was created by Chemical Vapor Deposition (CVD) growth process. Indications of post-growth treatment. Secondary color: Brown



THIS DOCUMENT WAS PRODUCED WITH THE FOLLOWING SECURITY MEASURES: SPECIAL DOCUMENT PAPER, INK SCREENS, WATERMARK, BACKGROUND DESIGNS, HOLOGRAM AND OTHER SECURITY FEATURES NOT LISTED AND DO EXCEED DOCUMENT SECURITY INDUSTRY GUIDELINES.

For terms & conditions and to verify this report, please visit www.igi.org