



INTERNATIONAL GEMOLOGICAL INSTITUTE

ELECTRONIC COPY

LABORATORY GROWN DIAMOND REPORT

December 27, 2025
IGI Report Number **LG758572782**
Description **LABORATORY GROWN DIAMOND**
Shape and Cutting Style **PRINCESS CUT**
Measurements **4.15 X 3.87 X 2.57 MM**

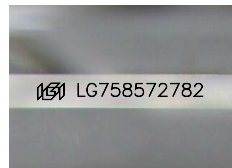
GRADING RESULTS

Carat Weight **0.36 CARAT**
Color Grade **FANCY INTENSE ORANGE PINK**
Clarity Grade **SI 1**

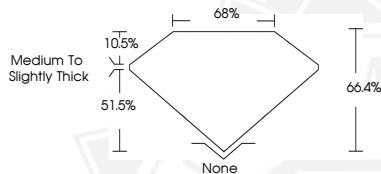
ADDITIONAL GRADING INFORMATION

Polish **VERY GOOD**
Symmetry **VERY GOOD**
Fluorescence **STRONG**
Inscription(s) **IGI LG758572782**

Comments: This Laboratory Grown Diamond was created by Chemical Vapor Deposition (CVD) growth process. Indications of post-growth treatment.



Sample Image Used



December 27, 2025

IGI Report Number **LG758572782**

PRINCESS CUT

LABORATORY GROWN DIAMOND

4.15 X 3.87 X 2.57 MM

Carat Weight **0.36 CARAT**
Color Grade **FANCY INTENSE ORANGE PINK**

Clarity Grade **SI 1**

Polish **VERY GOOD**

Symmetry **VERY GOOD**

Fluorescence **STRONG**

Inscription(s) **IGI LG758572782**

Comments: This Laboratory Grown Diamond was created by Chemical Vapor Deposition (CVD) growth process. Indications of post-growth treatment.



December 27, 2025

IGI Report Number **LG758572782**

PRINCESS CUT

LABORATORY GROWN DIAMOND

4.15 X 3.87 X 2.57 MM

Carat Weight **0.36 CARAT**
Color Grade **FANCY INTENSE ORANGE PINK**

Clarity Grade **SI 1**

Polish **VERY GOOD**

Symmetry **VERY GOOD**

Fluorescence **STRONG**

Inscription(s) **IGI LG758572782**

Comments: This Laboratory Grown Diamond was created by Chemical Vapor Deposition (CVD) growth process. Indications of post-growth treatment.



THIS DOCUMENT WAS PRODUCED WITH THE FOLLOWING SECURITY MEASURES: SPECIAL DOCUMENT PAPER, INK SCREENS, WATERMARK, BACKGROUND DESIGNS, HOLOGRAM AND OTHER SECURITY FEATURES NOT LISTED AND DO EXCEED DOCUMENT SECURITY INDUSTRY GUIDELINES.

For terms & conditions and to verify this report, please visit www.igi.org