



**INTERNATIONAL  
GEMOLOGICAL  
INSTITUTE**

**ELECTRONIC COPY**

**LABORATORY GROWN DIAMOND REPORT**

December 27, 2025  
 IGI Report Number **LG758572777**  
 Description **LABORATORY GROWN DIAMOND**  
 Shape and Cutting Style **EMERALD CUT**  
 Measurements **4.62 X 3.45 X 2.35 MM**

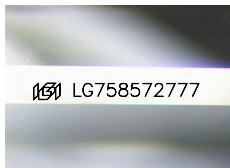
**GRADING RESULTS**

Carat Weight **0.36 CARAT**  
 Color Grade **FANCY INTENSE PINK**  
 Clarity Grade **VVS 2**

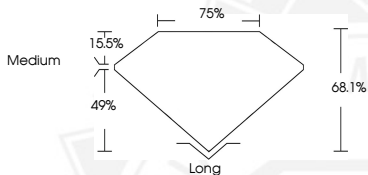
**ADDITIONAL GRADING INFORMATION**

Polish **VERY GOOD**  
 Symmetry **VERY GOOD**  
 Fluorescence **STRONG**  
 Inscription(s) **IGI LG758572777**

Comments: This Laboratory Grown Diamond was created by Chemical Vapor Deposition (CVD) growth process. Indications of post-growth treatment.



Sample Image Used



December 27, 2025  
 IGI Report Number **LG758572777**  
**EMERALD CUT**  
**LABORATORY GROWN DIAMOND**  
**4.62 X 3.45 X 2.35 MM**  
 Carat Weight **0.36 CARAT**  
 Color Grade **FANCY INTENSE PINK**  
 Clarity Grade **VVS 2**  
 Polish **VERY GOOD**  
 Symmetry **VERY GOOD**  
 Fluorescence **STRONG**  
 Inscription(s) **IGI LG758572777**

Comments: This Laboratory Grown Diamond was created by Chemical Vapor Deposition (CVD) growth process. Indications of post-growth treatment.



December 27, 2025  
 IGI Report Number **LG758572777**  
**EMERALD CUT**  
**LABORATORY GROWN DIAMOND**  
**4.62 X 3.45 X 2.35 MM**  
 Carat Weight **0.36 CARAT**  
 Color Grade **FANCY INTENSE PINK**  
 Clarity Grade **VVS 2**  
 Polish **VERY GOOD**  
 Symmetry **VERY GOOD**  
 Fluorescence **STRONG**  
 Inscription(s) **IGI LG758572777**

Comments: This Laboratory Grown Diamond was created by Chemical Vapor Deposition (CVD) growth process. Indications of post-growth treatment.



THIS DOCUMENT WAS PRODUCED WITH THE FOLLOWING SECURITY MEASURES: SPECIAL DOCUMENT PAPER, INK SCREENS, WATERMARK, BACKGROUND DESIGNS, HOLOGRAM AND OTHER SECURITY FEATURES NOT LISTED AND DO EXCEED DOCUMENT SECURITY INDUSTRY GUIDELINES.

For terms & conditions and to verify this report, please visit [www.igi.org](http://www.igi.org)