



INTERNATIONAL GEMOLOGICAL INSTITUTE

ELECTRONIC COPY

LABORATORY GROWN DIAMOND REPORT

December 26, 2025
IGI Report Number **LG758572751**
Description **LABORATORY GROWN DIAMOND**
Shape and Cutting Style **PRINCESS CUT**
Measurements **4.08 X 3.89 X 2.76 MM**

GRADING RESULTS

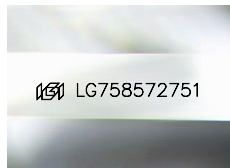
Carat Weight **0.40 CARAT**
Color Grade **FANCY VIVID PINK**
Clarity Grade **VS 2**

ADDITIONAL GRADING INFORMATION

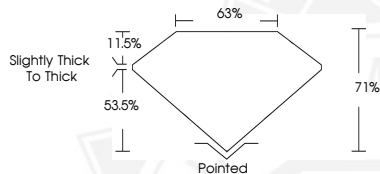
Polish **VERY GOOD**
Symmetry **VERY GOOD**
Fluorescence **SLIGHT**
Inscription(s) **IGI LG758572751**

Comments: This Laboratory Grown Diamond was created by
Chemical Vapor Deposition (CVD) growth process.
Indications of post-growth treatment.

Secondary color: Orange



Sample Image Used



December 26, 2025
IGI Report Number **LG758572751**
PRINCESS CUT
LABORATORY GROWN DIAMOND
4.08 X 3.89 X 2.76 MM
Carat Weight **0.40 CARAT**
Color Grade **FANCY VIVID PINK**
Clarity Grade **VS 2**
Polish **VERY GOOD**
Symmetry **VERY GOOD**
Fluorescence **SLIGHT**
Inscription(s) **IGI LG758572751**
Comments: This Laboratory Grown
Diamond was created by
Chemical Vapor Deposition (CVD)
growth process. Indications of
post-growth treatment.
Secondary color: Orange



December 26, 2025
IGI Report Number **LG758572751**
PRINCESS CUT
LABORATORY GROWN DIAMOND
4.08 X 3.89 X 2.76 MM
Carat Weight **0.40 CARAT**
Color Grade **FANCY VIVID PINK**
Clarity Grade **VS 2**
Polish **VERY GOOD**
Symmetry **VERY GOOD**
Fluorescence **SLIGHT**
Inscription(s) **IGI LG758572751**
Comments: This Laboratory Grown
Diamond was created by
Chemical Vapor Deposition (CVD)
growth process. Indications of
post-growth treatment.
Secondary color: Orange



THIS DOCUMENT WAS PRODUCED WITH THE FOLLOWING SECURITY MEASURES: SPECIAL DOCUMENT PAPER, INK SCREENS, WATERMARK, BACKGROUND DESIGNS, HOLOGRAM AND OTHER SECURITY FEATURES NOT LISTED AND DO EXCEED DOCUMENT SECURITY INDUSTRY GUIDELINES.

For terms & conditions and to verify this report, please visit www.igi.org